

1925-34

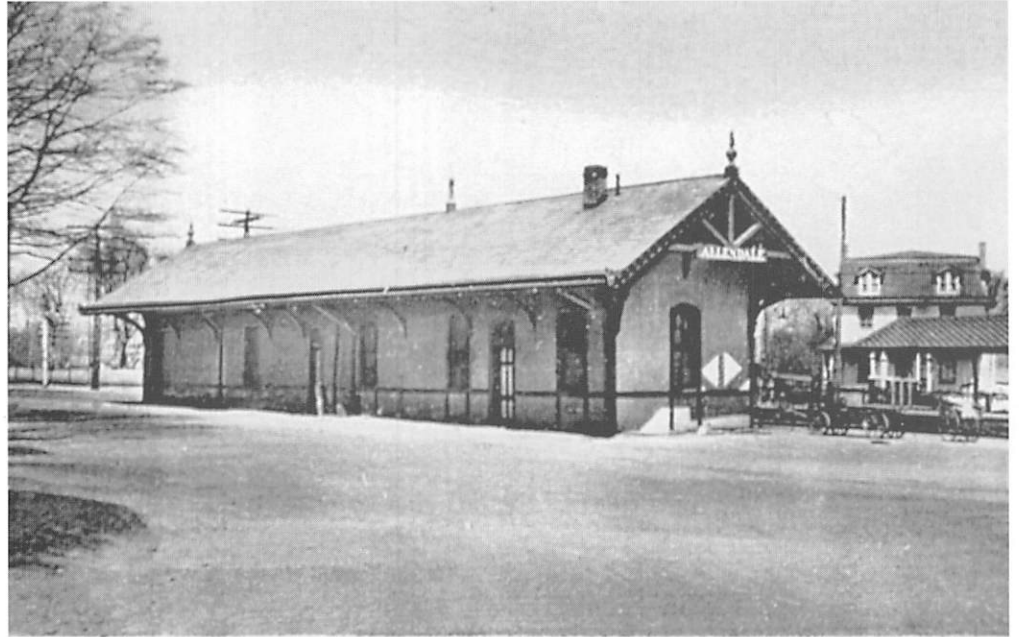


Allendale Avenue, Allendale N. J.

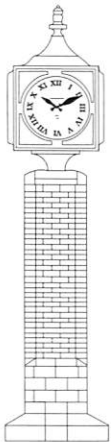
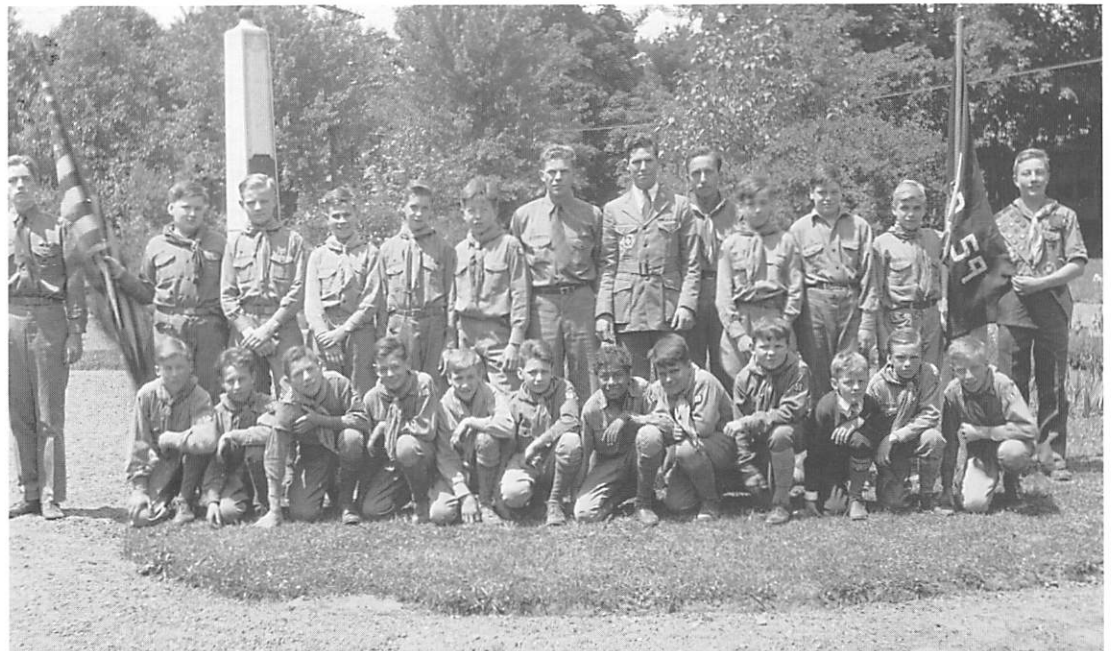


Allendale
A Century of Community

1925-34



Eric R. R. Station - Allendale N. J.



1925-34



Lake San Jacinto



... Cooling off ...

*Allendale
A Century of Community*

1935-1944

- Babe Ruth was a frequent guest at the Allendale Hotel (115 West Allendale Avenue) during the 1930's, when he played for the Yankees and frequently barnstormed in the remoter reaches of the metropolitan area. "When the place was practically closed, he used to go into the kitchen and cook there," according to the hotel owner, William Dixon.

- In the spring of 1935, a new grandstand was built overlooking the baseball field in "Recreation Park" behind Brookside School. This replaced the first grandstand there, built in 1915. (A semi-professional baseball team based in Allendale drew thousands of spectators to the new grandstand over the next two decades.)

- The total school budget for 1936-37 was \$34,000. This covered K-8 schooling for 260 students at the Brookside Avenue School (where "character is stressed and the usual semiannual examinations have been discarded," according to a contemporary account) and high school training at Ramsey High School.

- The Borough Ambulance Corps was organized in August 1937. The first ambulance was a used 1926 Reo, donated to the town by Dr. Kanning, who had bought it from Hackensack Hospital for \$1.00.

- In November 1938, homemade apple pies were being sold for 27 cents apiece, cupcakes for 35 cents a dozen, and soft rolls for 18 cents a dozen at Old Homestead Baked Products, 79 West Allendale Avenue.

- Allendale was the subject of an historical pamphlet written as part of the Federal Writers Project of the Works Progress Administration (WPA) in 1938. According to this pamphlet, the town's population at the time was about 2,000, and commuters formed the majority of the working population, with farmers, tradesmen, and merchants making up the rest. Two-thirds of the pamphlet is devoted to the fire department, which was a center for social activities in the borough. All festive borough events took place at the fire house.

- In 1938 an active fireman bought his own uniform, paid an initiation fee of \$1.00, and annual dues of \$1.50

- The most spectacular crime in Allendale's history occurred on April 7, 1938. Five armed bandits committed a daylight holdup of the First National Bank and escaped with \$10,511.77. During the robbery, 5 bank employees and 2 customers were locked in the bank's vault, from which they managed to trigger an alarm which summoned the police. The borough was soon thereafter visited by agents from the Justice Department, and two suspects were arrested in New York City on April 17.

- During the winter of 1938-39, West Allendale Avenue was made discontinuous at the train station for the first time, and the pedestrian underpass was built. There was lots of protest about "cutting the town in two" and making access to the east-side business district difficult for west-siders.

Mayors

1935 *Kenneth V. Fisher*

1936 *Kenneth V. Fisher*

1937 *Kenneth V. Fisher*

1938 *Kenneth V. Fisher*

1939 *Louis A. Keidel*

1940 *Louis A. Keidel*

1941 *Louis A. Keidel*

1942 *Louis A. Keidel*

1943 *Lyman Ceely*

1935-1944

- Work on the two railroad overpasses on West Orchard and West Crescent was begun on January 4, 1939, when a crew of 15-20 railroad workmen unloaded the first ties and rails for the tracks.

- The borough's 11-year-old police department was voted out of existence March 14, 1939. Council contends it can no longer afford the department. However, such practices as selling "courtesy cards" to provide safe passage to truckers passing through town were also suspected of playing a role in the department's temporary demise.

- Because of World War II and "in the interests of national defense," the Holiday Observers decided to forgo fireworks on July 4, 1941.

- On May 14, 1942, certificates for purchasing tires were first issued by the rationing board. Two applications were turned down.

- Allendale had 98 men "in service" by October 1942, and a ceremony dedicating Allendale's World War II Honor Roll was sponsored by the Holiday Observers.

- In a WWII version of recycling, on December 3, 1942, Allendale was the first community in New Jersey to reach the per capita quota set up in a nationwide general-salvage drive. Two thousand residents collected 103 tons of iron and steel scrap. Counting paper and other salvage items, Allendale's total was expected to reach 150 tons by December 31, 1942.

- On April 22, 1943, Allendale was in a "News of the Day" newsreel showing in first-run theaters. One scene showed Mayor Lyman Ceely buying the first war bond.

- In 1943, Henry Appert retired, selling the Allendale Produce Garden to McBride Inc. of Paterson.

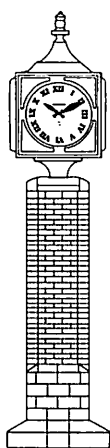
- The Allendale Cub Pack was organized in 1943 by the Methodist Church. Any boy between the ages of 9-12 was able to join.

- Also in 1943, the Allendale Boys' Club was formed. The club had 50 members with 20 in service to the country. The boys met in the firehouse. Their main activities were playing baseball and basketball.

- Eight Allendale men were killed during World War II, 1941-45. Their names are now memorialized on borough street signs: Ceely, Fox, Hamilton, Ivers, McIntyre, Sawyer, Scott, Yeomans.

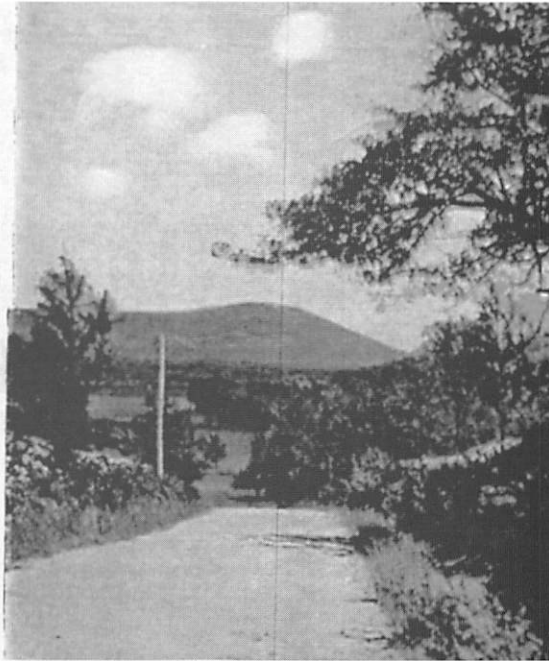
- The Allendale Council met in February, 1944, with Mayor Ceely presiding, to discuss plans for Allendale's 50th anniversary. The celebration was held in November, 1944.

- In 1944 there were 20 town roads and 10 county roads in town. The town paid \$260 a year for electric lighting of the town roads at night.



1935-1944

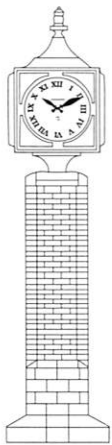
Kiddo come on to
Allendale, N. J.
Just to have a good
time.



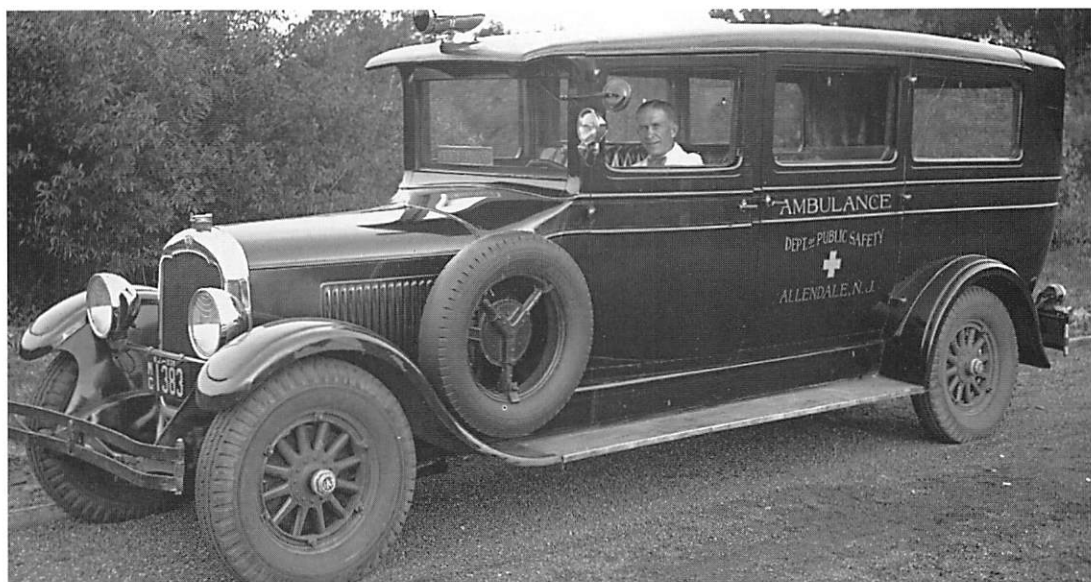
... Recycling? ...

Allendale
A Century of Community

1935-1944



1935-1944



First Ambulance



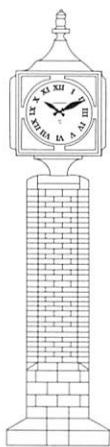
First Ambulance Corp.

*Allendale
A Century of Community*

1935-1944



*A typical week-end at
Crestwood Lake.*



1945-1954

• City people considered the area “country” well into the 1940s. Chickens were raised extensively. Many residents lost their chickens when, after a week of steady rain, the dams at the Ramsey Country Club Estates and Crestwood Lake broke on July 23, 1945, releasing torrents of water into the town. The Allendale pool was badly damaged in the flood.

• The 8th grade class compiled a history of Allendale as a class project during the 1944-1945 school year. An original copy is in the Brookside School library.

• The Senior Service Scouts Troop 49 was registered in February, 1945. The purpose of the Scouts was to prepare girls for service to their state and their nation. All were required to know First Aid, be a First Class Scout, and be of high-school age. There were 18 members in Allendale. At a Halloween party, the girls rolled bandages and packed Christmas boxes for servicemen.

• The Allendale Convalescent Home was operating at 668 West Crescent Avenue by 1946.

• Pasko C. Job and Ann Mary Job took over the Crescent Terrace Inn at 168 West Crescent Avenue in 1946 and renamed it Pat Job’s Crescent Inn. It was restored and rebuilt after a fire partially destroyed the building in 1952.

• The winter of 1947 was very severe. Stiles Thomas recalls the December snowstorm as

a “good storm,” perhaps the greatest snowfall since the storm of 1888.

• In 1947, the Dexter sisters of Franklin Lakes opened the Country Shop on West Allendale Avenue, next to what was then the police station (also in a store front), and across the street from the Allendale Hotel. In 1950, Mrs. Frances Dick of Franklin Lakes bought the store and moved it to 76 West Allendale Avenue in the new Pittis block of stores. Eva Schmidt bought the business in 1953, moved it to the corner location in 1971, and retired in 1993.

• The memorial plaque honoring Allendale’s heroes of World War II was dedicated during Memorial Day services and was affixed to the monument in Memorial Park, as was planned at the May 22, 1947 meeting of the American Legion Post 204.

• June 19, 1947: The electrically-converted gaslight fixtures in the Allendale Firehouse, a source of amusement to many, were replaced with modern fluorescent fixtures.

• In 1947, the old schoolhouse and former municipal building on Franklin Turnpike was leased by the borough to American Legion Post 204. The Legion, which later purchased the building for \$1, renovated the structure (it is likely that the second floor was removed at that time), which became known as the War Memorial Building. The Allendale Council began meeting in the building in 1950. (They had been holding their sessions in the firehouse.)

Mayors

1945 *J. George Christopher*

1946 *J. George Christopher*

1947 *Frederick J. Burnett*

1948 *Frederick J. Burnett*

1949 *Frederick J. Burnett*

1950 *Frederick J. Burnett*

1951 *L.R. Johnson*

1952 *L.R. Johnson*

1953 *John L. Tucker*

1954 *John L. Tucker*

*Allendale
A Century of Community*

1945-1954

- The Allendale Press began publication about 1950 at 124 West Allendale Avenue, with Irish-born James Edward Martin as publisher. In 1955, it became The Allendale Picture Press, and covered local news in Allendale, Ramsey, Saddle River, and Upper Saddle River. It was located at 93 West Allendale Avenue, behind Kaplan Cleaners.

- By 1950, there were 2,408 people in Allendale (up from 2,058 in 1940), living in 711 dwelling units. The average family size was 3.2 people.

- The Van Houten realty business, with its office in a building on the Crestwood Lake property in the late 1940s, moved in 1951 to the old Joseph Henry Mallinson homestead on the northwest corner of Franklin Turnpike and West Allendale Avenue.

- The Ben Franklin 5 & 10 store was in business in 1950 in the building that today houses Allendale Auto Parts at 75 West Allendale Avenue. Also along West Allendale Avenue were Andersen's Meat Market, Art's Shop (which sold slip cover, draperies, etc.), Better Sign Studios, Kraft's Bakery, Lehmen's Bakery, and Town Cleaners.

- Stiles Thomas started his insurance agency in 1950. He moved it from his Allendale home to 74 West Allendale Avenue, and later to the Braun ("Flatiron") Building.

- Business parking was available on West Allendale Avenue for about 50 cars and there

were small parking plazas at the railroad station and on either side of the tracks, but it was insufficient even then.

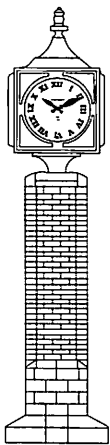
- In 1950, 317 children were enrolled in the K-8 school. That year, 97 Allendale students attended Ramsey High School.

- Allendale's postwar building boom in the 1950s included Bier Higgins' Briar Hill Custom Estates and San Jacinto Country Club Estates, and Colburn and DiPippo's development on Allen Street.

- Charles Bier and Richard Higgins built the Briar Hill houses, priced from \$35,000, on Arcadia Road. The houses featured the "luxuries" of year-round air conditioning, controlled lighting for candlelight effect, automatic garage door openers, and "RCA Melody Master music wherever you are."

- The McBride family allowed the Celery Farm to lie fallow until Victor Scafuro purchased 13 acres of land and greenhouses near what is now Meadow Lane off Cottage Place and opened a tropical fish hatchery in the early 1950's. Mr. Scafuro later merged his company with the Hartz Mountain animal supply firm.

- Allendale historian Pat Wardell: "I can remember finding and picking tiny wild strawberries that grew on the banks of the brook along West Crescent Avenue between the railroad tracks and the entrance to Crestwood Lake. This must



1945-1954

have been about 1950...and I wonder now if these were the remnants of Allendale's days as a great strawberry-producing area (Crestwood Lake was developed from Mallinson's Pond), and it seems very possible that these tiny berries could very well have been the wild descendants of earlier cultivated berries."

• Wilbur Ackerman sold Ack's Tavern at 9 Franklin Turnpike in 1951. The following year, the business reopened as the Turnpike Tavern.

• The Borough's master plan in 1952 noted the following major problems: deciding the best use of vacant land; providing accessibility and more parking space for the business area; increasing school enrollments; and protecting homes from deterioration due to poor street design and traffic.

• By 1954, the Allendale Fabric Store was in business at 83 West Allendale Avenue.



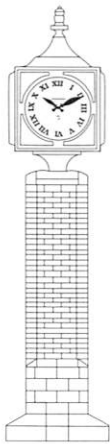
Welcome to town ...

Allendale
A Century of Community

1945-1954



The flood of 1945



ROLLER COASTER. Twisted like the rails of a Coney Island ride when flood waters gouged out the roadbed, this line of the Erie Railroad is undergoing repairs near Allendale, N. J.

1945-1954

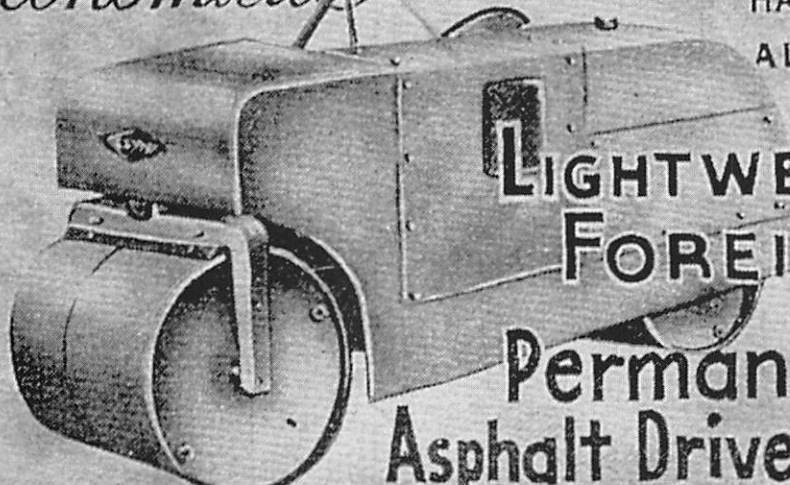


*Allendale
A Century of Community*

1945-1954

*Beautiful
Economical*

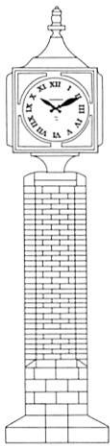
Phones
HACK-2-7543 J.
HACK-3-0381
ALEN-1-3549



**LIGHTWEIS &
FOREIT**

**Permanent
Asphalt Drive-Ways**

Allendale Avenue,
January 1948



1945-1954



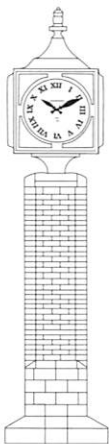
... commuters or
vacationers?

Allendale
A Century of Community

1945-1954

864910 NEW YORK BUREAU

REP. THOMAS TO RELEASE "IMPORTANT" NEWS
ALLENDALE, N.J.: SOME OF THE SUB-COMMITTEE
MEMBERS OF THE HOUSE UN-AMERICAN ACTIVITIES
COMMITTEE VISIT REP. J. PARNELL THOMAS, CHAIRMAN
OF THE COMMITTEE, WHO HAS BEEN ILL, AT HIS
HOME IN ALLENDALE, MARCH 18TH. AFTER THE VISIT
THOMAS SAID HE WOULD RELEASE AN "IMPORTANT"
STATEMENT IN WASHINGTON MARCH 19TH. HIS
COMMITTEE HAS BEEN INVESTIGATING COMMUNISM
AND NATIONAL SECURITY. LEFT TO RIGHT ARE:
REP. RICHARD B. VAIL (R-ILL.); REP. THOMAS
(R-N.J.); REP. JOHN McDOWELL (R-PA.); ROBERT
STRIPLING, CHIEF COUNSEL FOR THE COMMITTEE,
AND REP. RICHARD M. NIXON (R-CALIF.)
NY-A-B MGS CHI LON PAR E-A



1955-1964

- In 1955, Allendale Real Estate and Insurance Agency took over Griffiths Insurance. Norman Critchley, Howard J. Elschner, and Hadley Ford were the owners.
- In July, 1956, Colburn and DiPippo advertised "58 foot-long modern, luxury ranch homes" for \$23,900 on Allen Street. The homes included a living room, a dining room, a kitchen, 3 bedrooms, 2 baths, a porch, a two-car garage, an attic, and a full basement.
- November 1956 Albert O. Scafuro was selected Republican mayor of Allendale, joining brother Anthony Scafuro who was already Democratic mayor of neighboring Waldwick. The two men later appeared on Voice of America as a demonstration of how far children of immigrants could go in this country.
- Bier Higgins proposed two sections of the San Jacinto Estates in 1959. The plan consisted of 28 wooded building sites, on which four different models with 18 different exteriors were to be built. Base prices began at \$30,900. Optional features included open porch, fireplace, brick front, and patio.
- Allendale's police department was reinstated, replacing the marshal system, under Police Chief Robert Wilson in 1959.
- Convicted murderer Michael Salvi touched off a nationwide manhunt June 24, 1962 when he escaped from jail during a court transfer. The prisoner hopped a train, got off in Allendale, and

entered Kaplan's Candy Store (101 W. Allendale Ave.) to buy cigarettes. Officer Frank Parenti confronts Mr. Salvi outside the store and apprehends the prisoner after a struggle over his gun.

- Rev. Johann Schenk announced his departure for the Church of the Epiphany in January 1964 after seven years with the congregation.

- "Bub" Buhlman was honored for 40 years of service to Boy Scout Troop 59 in January 1964.

- Rebuilding the burned-down fire house pre-occupied the town in early 1964. Occupancy was delayed by road work, but finally achieved in April. The building was dedicated on Memorial Day, with George W. Prince presiding as chief of a 50-volunteer department.

- In February 1964, Calvary Lutheran Church celebrated its first decade with an overflow service that had to be held at the high school because so many people wanted to attend.

- The K-8 school district announced a \$826,176 school budget for 1964-65 at its Feb. 6 meeting. Student population was 1,031.

- Conservation was the topic at the Field and Stream Association's fourth annual Venison Dinner in February 1964.

- Allendale's population topped 5,000 on March 1, 1964, 231 more people than a year earlier. The town has 1,292 single family homes, 46

Mayors

1955 *John L. Tucker*

1956 *John L. Tucker*

1957 *Albert O. Scafuro*

1958 *Albert O. Scafuro*

1959 *George A. Dean*

1959 *Robert I. Newman*

1960 *Robert I. Newman*

1961 *Robert I. Newman*

1962 *Robert I. Newman*

1963 *Robert I. Newman*

1964 *Robert I. Newman*

1955-1964

two-family homes, 26 apartments, one hotel, and one nursing home.

- Allendale was one of six municipalities to protest Hackensack Water's proposal to build a two-million-gallon water storage tank in Upper Saddle River in March 1964.

- Meanwhile, the location of Allendale's proposed one-million-gallon tank was causing problems with its Ramsey neighbors, who asked to have the tank position moved away from its residential borders in March 1964. Edwood Critchley, then chairman of the public works department, proposed putting the water tank on wheels and "rolling it around town to avoid offending anyone."

- Brush fires were a frequent occurrence along Route 17. However, one that smoldered along the Allendale stretch of Rt. 17 from September to November 1964 drew a CBS camera crew when the town claimed it had insufficient water to extinguish the blaze.

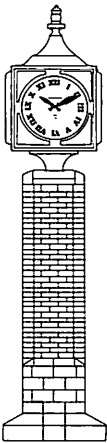
- In April 1964, J. Frank Roualt became the borough's first full-time clerk with a salary of \$7,000.

- A.A. La Fontain Co. of Hackensack was awarded the contract to construct Northern Highlands Regional High School in May 1964. Total bids for the project were \$2.87 million. The project was expected to be completed in 15 months.

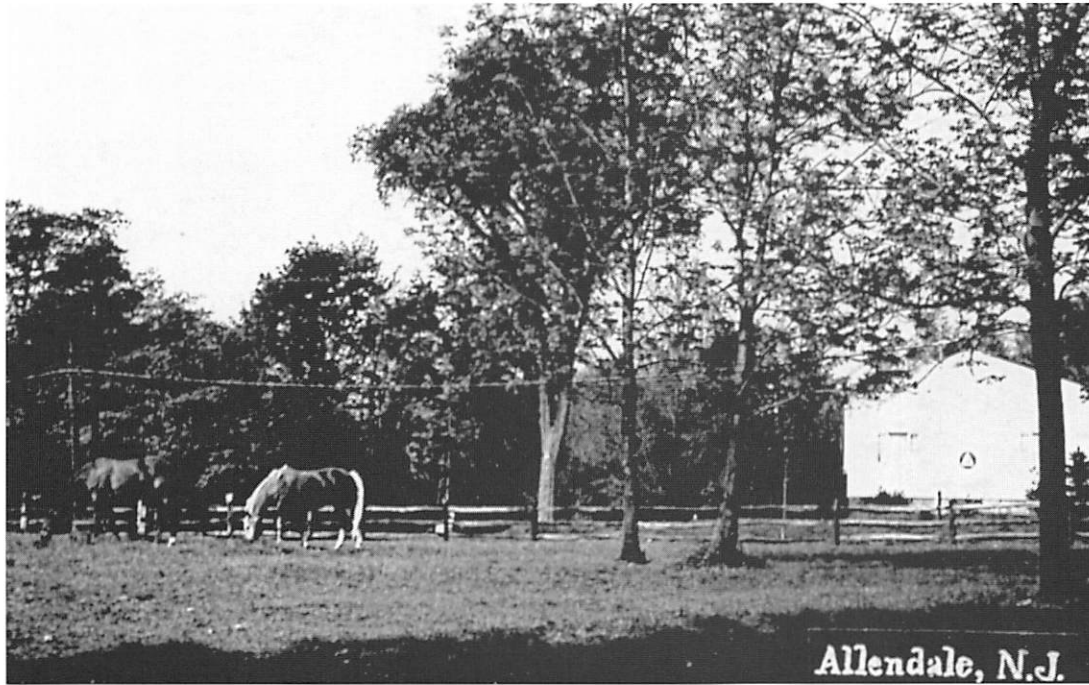
- Ground-breaking ceremonies for construction of the high school took place 6:30 p.m., May 15, 1964 at the Hillside Avenue site. The property, owned by P.G. Koole, was selected over other sites that included the Celery Farm, Thonus Farm, and the West Crescent Avenue industrial area across from Myrtle Avenue.

- In June 1964, the K-8 school board estimated it needed an additional 15 rooms to accommodate its burgeoning student population, but that the state had rejected Brookside School as the site for the entire expansion because the school's grounds were too small.

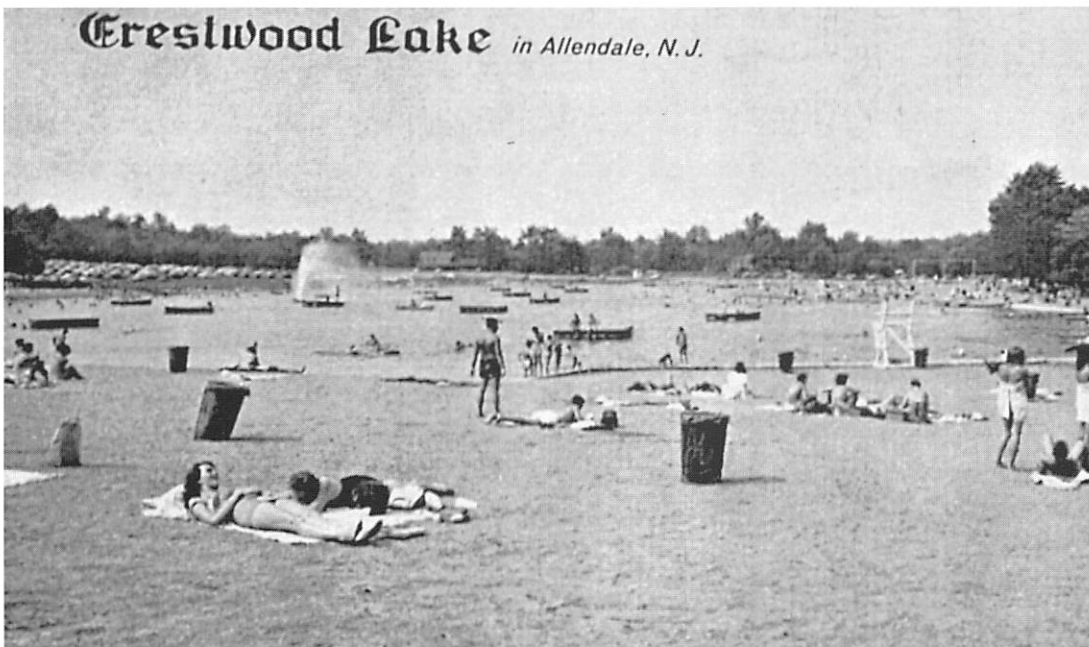
- Operating losses were cited by the Erie Lackawanna Railroad as the reason it proposed discontinuing commuter service through the area in November 1964.



1955-1964



Thurston's corral



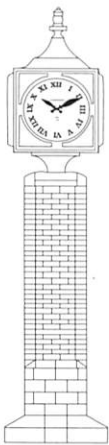
Allendale
A Century of Community

1955-1964

Downtown - 1958



Site of the Post Office



1955-1964



*Northern Highlands
Original Board of Education*



Groundbreaking

*Allendale
A Century of Community*

1965-1974

• Allendale members of the First Presbyterian Church of Ramsey announced plans to create a satellite church, Highlands Presbyterian, in January 1965, buying the Church of the Epiphany's Franklin Turnpike for \$60,000, since the Episcopal church was planning to construct a new building on West Crescent Avenue.

• The Allendale sewer ordinance was approved in February 1965, but work did not begin until January 1969.

• Library circulation in 1965 was 37,086 volumes, more than double the number ten years ago.

• The planning board voted against rezoning Crestwood Lake for industrial use in June 1965. Plans for industrial use of Crestwood Lake were again rejected in 1966, and the owners withdrew the property from the market.

• The K-8 Board of Education approved plans to build a new K-3 school building and the site was approved by residents in June 1965. Contracts totalling \$680,770 for construction of Hillside School were granted in March 1966.

• Northern Highlands Regional High School opened Sept. 20, 1965.

• The death of a 17-year-old motorcyclist on the Dunn's Curve section of East Allendale Avenue in April 1966 renewed interest in realigning the road's dangerous shape.

• Allendale was assigned its 07401 zip code in October 1966.

• Fairleigh Dickinson University considered buying 15 acres of Allendale land between Powell Road and Route 17 in November 1966. The proposal was dropped.

• The new Guardian Angel Church building and parish hall was dedicated Nov. 26, 1966 by the Most Rev. Thomas Boland, Archbishop of Newark. Some 500 parishioners attend the evening celebration and dance.

• The Allendale Volunteer Fire Department honored Mrs. Maude A. Connelley at her funeral in December 1966. The only female member of the fire department, Mrs. Connelley had owned the Allendale Bar and Grill until 1963.

• A student squeeze forced the high school board to turn down a January 1967 request by Ho-Ho-Kus to accept its students starting in 1971, when Ridgewood would no longer have room to accept their 317 students.

• High school board members announced in January 1967 that an addition was needed for Northern Highlands, opened 16 months earlier.

• Teacher and resident Aileen Wilson was named first principal of Hillside School in April 1967, and presided over its dedication in October 1967.

Mayors

1965 Robert I. Newman

1966 Robert I. Newman

1967 Joseph F. Waldorf

1968 Joseph F. Waldorf

1969 Herbert Lange

1969 Albert J. Merz, Jr.

1970 Albert J. Merz, Jr.

1971 Albert J. Merz, Jr.

1972 Albert J. Merz, Jr.

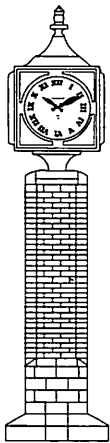
1972 Norman S. Lane

1973 Robert E. Schenk

1974 Robert E. Schenk

1965-1974

- Council approved purchase of a new 500 gallon La France pumper at an estimated cost of \$135,000 in June 1967 for the fire department.
- Police Chief Robert Wilson announced his retirement from the force in June 1967 after 20 years with the department, 17 as chief.
- Frank Parenti, a member of the Allendale police force since 1946, was sworn in as chief of the department by Mayor Joseph Waldorf June 1, 1967.
- Rev. Thomas Slater Ward was installed as first minister of Highlands Presbyterian in January 1968.
- Allendale land was purchased for the Route 17 interchange February 1968.
- The state rejected a proposal to build a new public library north of Brookside School in March 1969. Fourteen organizations join forces to raise money for a new library.
- The first hearing on the Lee Memorial Library site plan was held May 1974.
- Plans for a three-phase expansion of Northern Highlands were presented in May 1969, but defeated in a September referendum vote. Expansion would later be approved for student occupation by September 1972.
- A home near the corner of Cottage Place and Franklin Turnpike was leased by the police department for three years to serve as its headquarters in February 1971.
- Crestwood Lake opened for Allendale residents only starting June 1972.
- Tennis courts were proposed for construction in Crestwood Park March 1974.



1965-1974



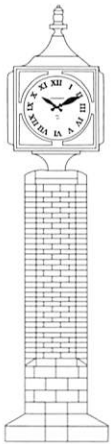
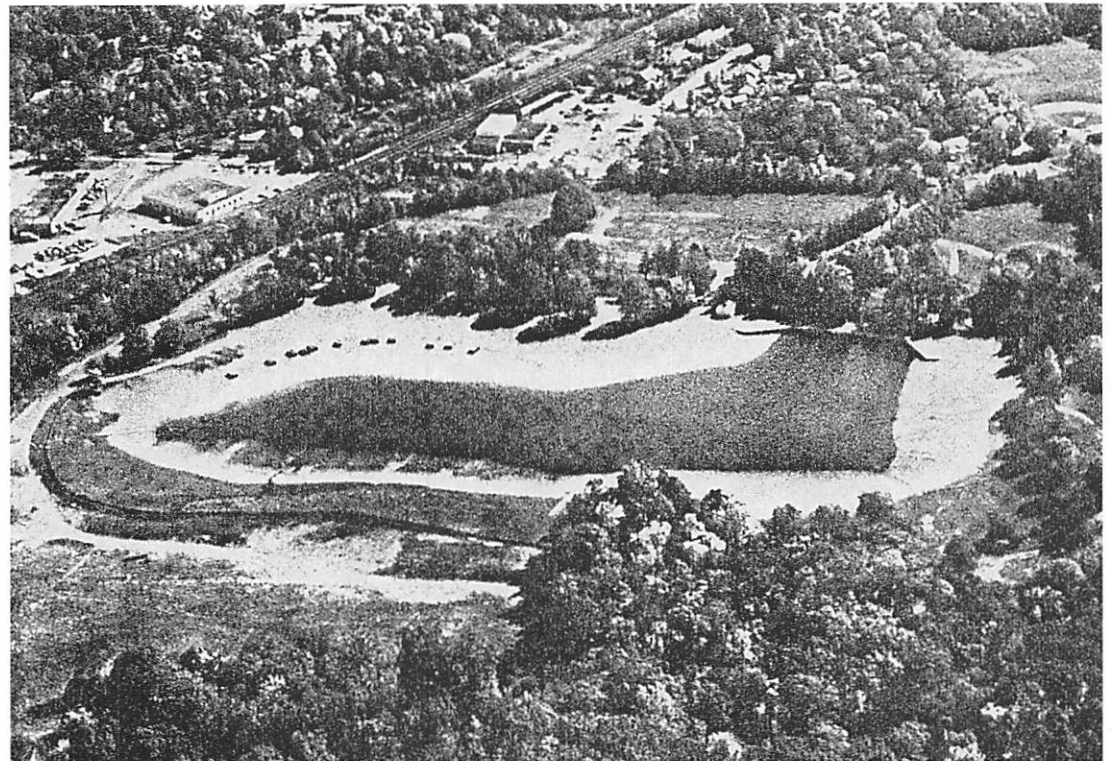
Dunn's Curve

1965-1974

*Northern Highlands
Regional High School*



*Our new town lake ...
Crestwood*



1975-1984

- Two eight- year-olds were arrested in August 1975 for fire-bombing the Allendale Liquor Store and setting fire to the Allendale Hotel.
- Independence Banks opened in January 1976 with a Bicentennial parade, cannon, and Bicentennial dollars to the first 100 customers. First-day deposits of \$400,000 were reported.
- The high school's 21-member jazz ensemble won the state championship in March 1976.
- A man believed to be the Ramsey Rapist was cornered by police on Arcadia Road in November 1977 after a nine-month crime spree in the area. However, the man could not be positively identified by his victims and was later released.
- Construction of the Pearl Court industrial complex off Boroline Road was approved in November 1977.
- In December 1977, council approved purchase of the Church of the Epiphany building on West Crescent Avenue to house its municipal offices.
- An appellate division of Superior Court upheld the borough's refusal to approve construction of 284 townhouses on property zoned for 30 single family homes in January 1978. The site became Gloria Drive.
- MacIntyre Lane was proposed as a 15-home through-street in March 1978.

- The borough moved municipal offices from the borough's first school building on Franklin Turnpike into the converted Church of the Epiphany structure on West Crescent Avenue May 31, 1978. The original school was converted for use by the police department.
- Water wells 2, 3 and 4 were closed with tetrachlorethylene contamination in July 1978.
- The Church of the Epiphany won approval to construct a new church on George Street in October 1978 and was consecrated Sept. 30, 1979.
- Construction of the new library adjacent to the borough hall began in December 1978.
- An attempt was made to save the historic Smith Mill House at 350 Brookside Avenue from being leveled as part of a construction project in June 1979, but the house was destroyed by fire July 10.
- North American Realty finally received approval for it's 63 lot subdivision off Powell of Arcadia Roads after appearing at over 20 meetings from January 1978 through November 1984.
- Anne Kanze was sworn in as the police department's first female officer Aug. 9, 1979.
- Crestwood Mews Apartments off Myrtle Avenue, the first of their kind in Allendale, were approved for construction Oct. 4, 1979.

Mayors

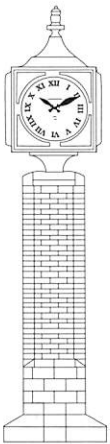
- 1975 Edward Fitzpatrick**
- 1976 Edward Fitzpatrick**
- 1977 Edward Fitzpatrick**
- 1978 Edward Fitzpatrick**
- 1979 Edward Fitzpatrick**
- 1980 Edward Fitzpatrick**
- 1981 Edward Fitzpatrick**
- 1982 Edward Fitzpatrick**
- 1983 William A. Simpson**
- 1984 William A. Simpson**

1975-1984

- Henry Siebel, superintendent of schools for 19 years, announced his retirement for the end of the 1978-79 school year. Joseph Cornell was appointed the new superintendent.
- Allendale acquired 60-acre Celery Farm property as a wildlife preserve in April 1981 using state Green Acres funding.
- The new Ambulance Corps building on Franklin Turnpike near Arcadia Road was dedicated June 13, 1981.
- Construction of a traffic light at Brookside and West Crescent Avenues began in August 1982.
- Highland's 100-member marching band played host to the state band tournament in

October 1982, placing first in the Atlantic region competition.

- Memorial Drive was changed to DeMercurio Drive June 2, 1983 in honor of Rocco DeMercurio killed in Vietnam Dec. 31, 1969.
- Planning board approves Crescent Woods - a 12 lot subdivision on site of the former San Jacinto Swim Club.
- Joseph Dorer, principal of Brookside School for 25 years, retired from the district at the end of the 1983-84 school year. He was replaced by Aileen Wilson, then principal of Hillside School, who in turn was succeeded by newcomer H. Evan Powderly.



1975-1984



Our Celery Farm

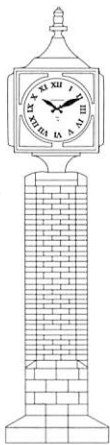
*Allendale
A Century of Community*

1975-1984

Lee Library



50 West Maple



1975-1984



(Left) 411 Brookside Avenue
(Right) 144 East Allendale Avenue

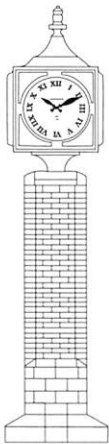
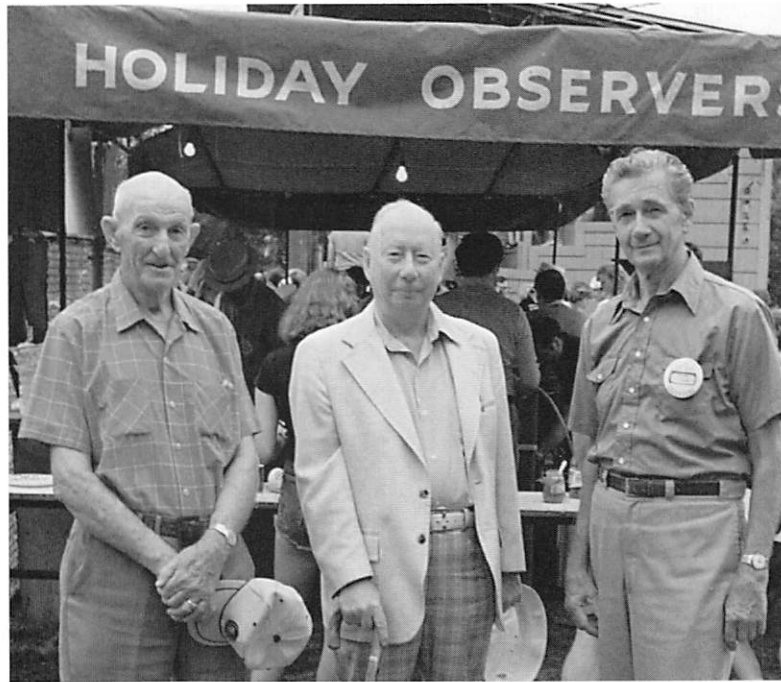


(Left) Now ... Highland Manor

Allendale
A Century of Community

1975-1984

The Holiday Observers are always there.



This 1978 GMC ambulance will be dedicated at the Borough's Memorial Day services. When the Allendale Ambulance Corps was formed in 1936, a second-hand hospital ambulance served as its first van.

Photograph by Helen Barbara Ash

1985-1994

- A five-home subdivision of the Asten-Linder home property at 200 East Allendale Avenue was approved by the planning board in April 1986, resulting in construction of Louise Court.
- A six-home extension of East Orchard Street was approved in January 1987.
- Allendale and Saddle River agreed to pave their respective halves of Boroline Road in July 1987 so construction of the industrial complex can begin when the first site plan is approved. The road had been a barely-passable dirt lane used as a short cut to reach the Pearl Court industrial complex.
- Ground-breaking began for a 166-bed two-story addition to the Allendale Nursing Home Aug. 3, 1987.
- Development of the first two lots of the 52-acre Boroline Road industrial complex were approved for development by the planning board Aug. 20, 1987.
- A hotly contested school board election generated the largest voter turnout in the town's history. On April 5, 1988, a record 1,260 residents or 37 percent of Allendale's registered voters went to the polls to re-elect incumbents, Betty DiGrutilla, Susan Poskanzer, and Libby Jones by 3-to-1 margins.
- The borough's clerk/administrator of 19 years, Norma Colburn, retired in April 1988.
- The borough instituted curbside recycling pickups June 13, 1988.
- Dr. Joseph Cornell resigned as superintendent of the K-8 district June 13, 1988 and was replaced by Thomas Morton of the Lafayette N.J. school district.
- A 45-townhouse complex was proposed for the 15-acre Thonus Farm on East Allendale Avenue and finally approved in 1988 after prolonged discussion about the project's impact on the neighboring Celery Farm wildlife preserve.
- Police Chief Frank Parenti retired after 43 years with the force at the end of 1989, to be succeeded by resident and 20-year veteran Robert Herndon.
- Residents were a-gush for two weeks as movie stars Harrison Ford and Bonnie Bedelia film "Presumed Innocent" on East Orchard Street and in front of Brookside School in September 1989. Students were chosen by lottery to serve as extras during scenes in front of the school.
- A facelift for the business section of West Allendale Avenue was approved by council in April 1990. Paver sidewalks, increased parking, new lighting, and removal of many telephone and electric wires hanging across the street were features of the project.

Mayors

- 1985** *William A. Simpson*
- 1986** *William A. Simpson*
- 1987** *Clarence Shaw*
- 1988** *Clarence Shaw*
- 1989** *Clarence Shaw*
- 1990** *Clarence Shaw*
- 1991** *Albert H. Klomburg*
- 1992** *Albert H. Klomburg*
- 1993** *Albert H. Klomburg*
- 1994** *Albert H. Klomburg*

1985-1994

• An 11-home subdivision of the A.C. Ackerman house and property at 70 Franklin Turnpike was approved by the planning board in May 1991. The house was believed to contain remnants of the oldest house in the borough, is on 11 acres of property that were once the Rozmus Nursery, and will be named Rozmus Court. The board conditioned approval on restoration of the Ackerman house base.

• Over 800 teachers apply to fill a Grade 1 teacher vacancy at Hillside School over the summer of 1991, a local indication of the teacher surplus being experienced throughout the state.

• In November 1991 JOMAC Realty received approval to construct a 59-unit apartment project on the Allendale Lumber Yard site.

• Dunn's Curve finally had its accident-causing bend removed, in June 1992.

• Jack Mintzer, founding principal of Northern Highlands Regional High School, retired in June 1992 after graduating the school's 25th class. He was succeeded by Dr. Geoffrey Gordon and then Vice Principal Vince Herold.

• A town clock paid for with private donations and honoring Mayor Clarence "Curly" Shaw's efforts for the downtown renovation was installed in the traffic island where Myrtle Avenue meets West Allendale Avenue on June 16, 1992.

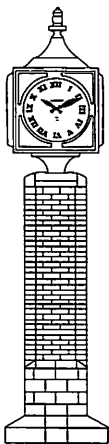
• Dr. Aileen Wilson, retired in June 1992. She was succeeded at Hillside by Brookside School Assistant Principal James Hagy.

• North American Realty Corp.'s housing development off Powell and Arcadia Roads was allowed to construct 13 of 63 homes originally planned for the project. Most of the land remains undeveloped as protected wetlands.

• Evan Powderly resigned as principal of Brookside School in June 1993. He was succeeded by Noreen Hajinlian.

• Recycling was so successful that the borough cut its twice-a-week garbage services to once a week in January 1993.

• In preparation for the Centennial Celebration the Allendale Historical Committee welcomed to town Arthur Yorke Allen, great-great-grandson of Joseph Warner Allen, for whom Allendale is named. Mr. Allen will return with other family members on September 24th to take part in the Centennial Parade and deliver a short address.



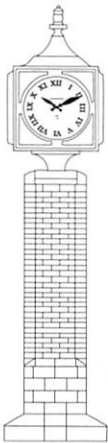
1985-1994



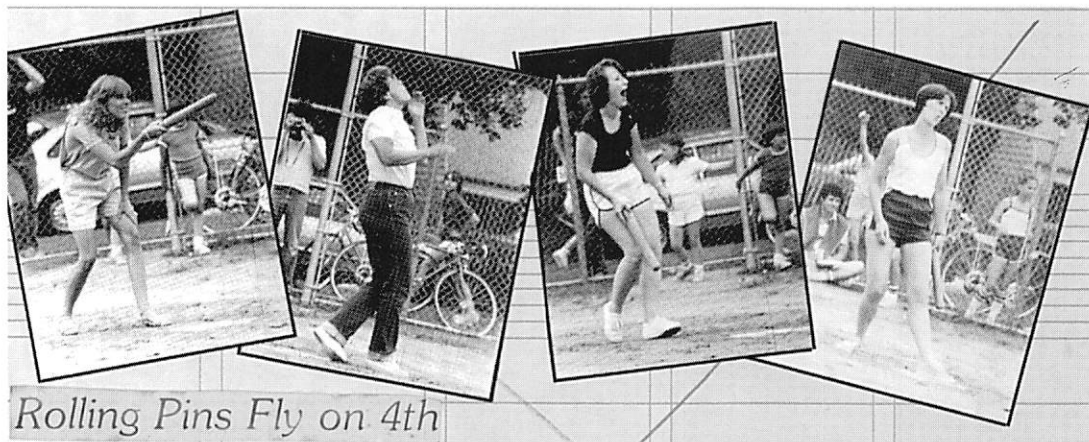
Allendale
A Century of Community

1985-1994

Firemen celebrate their
75th



1985-1994



Rolling Pins Fly on 4th



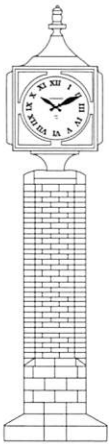
(Right) The Salt Shed ... for the winter of '93-'94.

1985-1994

An Historic Visitor



Daily Commuters



1985-1994

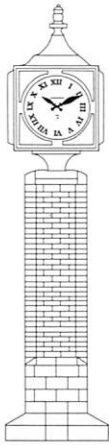


*Allendale
A Century of Community*

1985-1994



See you at the Gala Ball on
November 4th.



They are swell dancers
in

Allendale

I know a few

1985-1994



We made it . . . Happy Birthday Allendale!

Allendale
A Century of Community

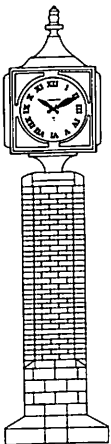
Organizations

Allendale Ambulance Corps

For over 53 years, the Allendale Ambulance Corps has been meeting the needs of the residents of Allendale and Saddle River by functioning as an emergency medical service. They also provide services such as transportation to convalescents, stand-by coverage at community events and fire scenes, free temporary use of home care supplies, and instruction in first aid and CPR.

Allendale Chamber of Commerce

The Chamber was organized in 1976 (the original organization having been dissolved in the 1950's) for the purpose of advancing the commercial and civic interests of the Borough of Allendale. Current membership is 39. Primary goals are to promote: integrity and good faith; equitable principles in business; uniformity in commercial usages; and to discover and correct abuses the the aforementioned. Also takes part in representing the Borough in the consideration and resolution of state and national problems affecting the Borough.



Allendale Blood Donors Association

The Association has been running blood drives (usually on election day) for the last 25 years. Current membership is 3. Working closely with the Bergen Community Blood Center, the Association also arranges for replacement blood for all residents who need it at no charge.

Allendale Volunteer Fire Department

The Allendale Volunteer Fire Department was established in January of 1910 when a group of Allendale citizens, spurred into action by a disastrous fire in 1909 which destroyed the residences housing the Kornhoff Bakery and the Scholz Barber Shop, purchased eleven iron tires from the Erie Railroad. These were hung in frames to to serve as Allendale's first fire alarms. In March, 1910, a hook and ladder truck was ordered at a cost of \$995.00. Today, the Department continues to take great pride in serving the residents of Allendale with trained and ready volunteers. Drills are held at the Allendale Fire House (the original fire house burned to the ground) every Thursday evening at 7:30 pm. New volunteers are always welcome.

Allendale Historical Society

Founded in 1974, the Society's purpose is to collect and preserve Allendale's history and heritage. Membership totals 120. The primary current activity is publishing a quarterly newsletter, "Allendale History & Heritage". The Society welcomes new members who may wish to take a leadership position.

Allendale Independent Republican Club

The Club fosters involvement in the political process with focus on issues that affect our local government.

Allendale Memorial V.F.W. Post 10181

Incorporated in 1988, current membership is 33. The Veterans of Foreign Wars is a fraternal, patriotic, historical and educational organization. Goals are: to preserve and strengthen comradeship amongst its members; to assist worthy comrades; to honor and perpetuate the memory and history of our dead, and to assist their widows and orphans; to maintain true allegiance to the government of the United States of America, and fidelity to its constitution and laws; to foster true patriotism; to maintain the institutions of American freedom; and to preserve and defend the United States from all her enemies, whom so ever.

Allendale Newcomer's Club

Founded in the late 1960's, current membership is 125. Newcomers is a social club, the primary purpose to help new families get acquainted with and adjusted to the community. Originally the club was combined with the Fardale section of Mahwah. The group separated in 1975.

Allendale Post Office

The Post Office serves the Borough of Allendale with a staff of 18, including Letter Carriers and office/counter personnel.

Allendale Public Schools

The Allendale Public Schools consist of Hillside Elementary, serving grades K-3 and Brookside School, serving grades 4-8. There are currently 778 students, 72 certified personnel and 30 support staff. The system provides a superior education to the youth of Allendale so that they will be prepared to be successful in high school and to be a productive member of society. The elementary school system originated in a one room building erected in 1824. In 1860, School District #6 was established. Allendale Public Schools was incorporated in 1894, the same year as the Borough. The first School Board was established in 1907. Brookside School was built in 1929, with additions in 1951, 1957, 1960 and 1971. Hillside School was constructed in 1967.

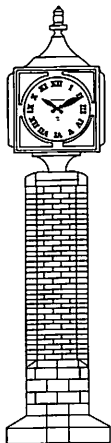
The Board of Education meets every third Monday of the month at 8:00 pm in the Brookside Library.

Allendale Public Schools - PTO

The P.T.O. is a non-profit organization of parents, teachers and administrators, working together for the purpose of enriching our school programs. Meetings are generally the second Tuesday of each month at 8:00 pm in the Brookside Library. The P.T.O. is instrumental in helping the schools run many programs such as the instructional learning center, the Hillside Library, the children's theater, and the picture person program. Monies raised by the P.T.O. are used to fund enrichment programs for all students as well as to enhance school facilities.

Allendale Recreation Commission

Open to all Allendale residents, the A.R.C. was incorporated in 1957. The A.R.C. sponsors youth recreation programs for Allendale children grades K through 8. The A.R.C. is a self-sustaining non-profit organization staffed entirely by volunteers. It is dedicated to improving the team sports experience for children, with emphasis on fun & learning. Programs are offered in soccer, basketball, baseball, softball and kickball. The A.R.C. also offers training and certification for coaches.



Allendale Woman's Club

Formerly the Junior Woman's Club of Allendale founded in 1933, name was changed in 1992. Currently has 24 members. Primary focus is fundraising for distribution among various charitable organizations. Recipients include the Allendale Athletic Association, school scholarships, Hackensack Rape Crisis Center, FLOW, Hugh O'Brien Youth Foundation, Crestwood Park Playground, Boy Scouts, Girl Scouts, etc. Club members also volunteer for community projects such as puppet shows, Meals on Wheels, bookmark contest for grade schools, yearbooks for 3rd graders, and Girls Career Institute for High School Juniors. Members and their families also participate in a variety of social activities.

American Legion Post 204

The Post is an organization whose membership is open to all honorably discharged veterans of the Armed Forces. They keep abreast of issues that specifically affect their members with emphasis on veteran's rights and benefits.

Archer United Methodist Church

The Archer Methodist Episcopal Chapel was built in 1876 by the Honorable Oliver Hazard Perry Archer for the Methodists of Allendale. Sometime in the following decade, the Archer Hall was built. The building which later became the Parsonage was built in 1891. In 1893 O.H.P. Archer enlarged the church as a memorial to his parents, Jonathan and Hannah Archer and the edifice was renamed the Archer Memorial Methodist Church. The Sunday School/Nursery School wing was built in 1963.

Bergen Crossroads Chapter of the American Red Cross

Founded in 1916, members currently number over 1,000. The American Red Cross is a humanitarian organization, led by volunteers, that provides relief to victims of disasters and helps people prevent, prepare for, and respond to emergencies. Services include: Disaster relief, education and preparedness; Emergency communications and assistance to members of the armed forces and their families; Health and safety, including CPR, first aid, lifeguard training & swimming; Parenting Premies and Family Development Center; Preservation of independent living (medical transportation service, Meals on Wheels, post stroke & alzheimer's support groups, and braille transcription); HIV/AIDS education; International humanitarian law; International tracing services; and youth services.

Bergen Highlands Area League of Women Voters

The League covers the towns of Allendale, Mahwah, Ramsey, Saddle River & Upper Saddle River. Current membership is 50. The mission of the League, a non-partisan political organization, is to encourage the informed and active participation of citizens in their government and influence public policy through education and advocacy. The goal of the League is to empower citizens to shape better communities worldwide.

Beth Haverim Reform Temple of Northeast Bergen

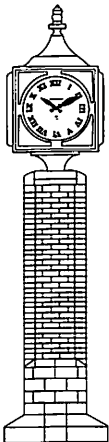
Incorporated in 1971 with 12 charter families, the congregation now numbers 160 families. The congregation initially met in the Waldwick Methodist Church. In 1978 the congregation purchased the Masonicus Firehouse from the Township of Mahwah in order to establish a permanent synagogue. The building was one of the town's first one room schoolhouses, constructed in 1882. The congregation serves residents of Allendale, Mahwah, Ramsey, Upper Saddle River and Saddle River.

Boy Scouts of America

Cub Scout Pack 59 was started in the mid 1950's. The Pack is currently comprised of 45 scouts. The primary purpose of the Pack is to help the boys develop good citizenship, character, a strong body and mind. Cubs also teaches respect for others and helps develop new friendships. Cubs engage in a number of activities ranging from community service, marching in the Memorial Day Parade, and, as the boy matures, participating in a number of overnight camping trips designed to develop self reliance and independence.

Calvary Lutheran Church

Incorporated March 14, 1956, Calvary Lutheran was started as a "mission congregation" by the Evangelical Lutheran Church of America. Beginning with 14 families, Calvary now numbers 141 family units. Worship, religious education, youth ministry, missionary sponsorship, lay leadership, family fellowship and community service have been Calvary's strengths. Historically linked to Allendale, Calvary Lutheran began holding worship services in the old Allendale Fire House in 1954. When it burned down, the congregation was fired up to buy 5 acres and build their first building at the corner of West Crescent Avenue and Ivers Road. The Rev. Luther Key was Pastor. In May of 1963, Pastor John F. Nelson accepted the call and has served the congregation the past 31 years. A contemporary sanctuary was added in 1970 and in 1987, renovation and expansion doubled the size of the Calvary Education-Community Center. Calvary Christian Nursery School opened in 1982. More than a dozen community & service organizations use Calvary's facilities.



The Community Arts Association

The Association conducts both painting classes and workshops, and hosts demonstrations by well-known artists in oil, watercolor, and other media. Outdoor shows are held in the spring and fall that display works of the members. Meetings are held the second Monday of each month (Sept - May) at 8:00 pm at the High School.

F.I.S.H.

F.I.S.H. is a non-professional, volunteer group offering temporary emergency help to the residents of Allendale, Mahwah, Waldwick and Upper Saddle River with no charge or obligation. Their help line is in operation 24 hours a day to provide emergency transportation, babysitting, homemaking, shopping or any other assistance to the elderly, the lonely, the handicapped or the shut-in. They also provide community services information.

Church of the Epiphany - Episcopal

The Episcopal Church of the Epiphany was started during the Epiphany season in 1872 and has the distinction of being the oldest church organization in the Borough of Allendale. From modest beginnings in the parlor of a private home, to its first edifice - a small chapel, the church has been situated at several different locations (the present Highlands Presbyterian Church & the present Borough Hall), moving to its current location on George Street during the late summer of 1979. A new Parish Hall erected in 1990 completes its facilities. The parish consists of approximately 65 families from Allendale and surrounding communities. Throughout its long history, a love and devotion to the growth and spread of Christ's Kingdom has been the constant inspiration of its parish family. This is evident in the strong outreach program of the parish, particularly its work with the homeless and disadvantaged.

Friends of the Library

Founded in 1971, the 50 members on the Friends of the Library provide volunteer services in support of the Lee Memorial Library. Activities include: children's story times; manning of the circulation desk; delivery of books to the nursing homes; used book sales; community programs; and library fundraisers. The Friends originated the community calendar and campaigned for the move to the "new library" in the late 1970's (formerly at the southeast corner of Franklin Turnpike and W.Allendale Avenue).

Girl Scouts of America

Started in the US in 1917, Girl Scouts helps young girls develop self-potential, relate to others, develop values and contribute to society. Activities include science, out-of-doors, career exploration, arts, fitness and more. Troop #50, the first in Allendale, started in the summer of 1932. This Troop still exists today as a Brownie Troop. Currently Allendale Girl Scouts consists of 200 girls and 42 adults in 17 troops. There are 5 levels in Girl Scouting: Daisy, ages 5-6 or grades K-1; Brownie, ages 6-8 or grades 1-3; Junior, ages 8-11 or grades 3-6; Cadette, ages 11-14 or grades 6-9; and Senior, ages 14-17 or grades 9-12.

Guardian Angel Roman Catholic Church

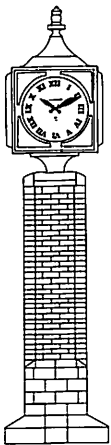
The first Catholic Mass in Allendale was celebrated with 10 families in attendance in 1903 in Linkroni's Confectionary Store (subsequently Buddy's & Allendale Sweet Shop). In 1913 St. Luke's Church established a mission in Allendale. In 1914 a home at the corner of Maple and Elm Streets was purchased as a permanent meeting place for the congregation. In the early 1950's, the Archdiocese of Newark purchased 11.5 acres from the previous Twin Gates estate at the corner of Franklin Turnpike and Allendale Avenue. The main house was transformed into a combination church and rectory. The Church of the Guardian Angel was established as a separate parish of the Archdiocese of Newark on June 25, 1954. The current Church and Auditorium was completed in 1966. The current congregation exceeds 600 families.

Highlands Presbyterian Church

Highlands Presbyterian Church, formed as an outreach mission by the First Presbyterian Church of Ramsey, became an organized church in 1966. The congregation totals 150 to 160. The building dates back to 1875. At that time it was called the "Chapel in the Willows", an Episcopal Mission and was located at the northeast corner of Cottage Road and Franklin Turnpike. The Chapel was moved to its present site (corner of Franklin Turnpike and E. Orchard Street) in 1894. In 1907 the Parish house was added. The Rectory was constructed in 1952. The building was purchased from the Church of the Epiphany in 1965.

Holiday Observers

Established in 1919, the Holiday Observers was formed by neighbors who pooled their fireworks to celebrate the Fourth of July. The group was officially incorporated in 1946 as a non-profit organization and currently has a membership of 120. The group now celebrates holidays throughout the year with residents to provide and encourage patriotic observance of holidays and to instill respect among our young people for our traditions. Generous support from residents is returned in the form of recreation, entertainment and assistance in community projects. Meetings are held the first Wednesday of every month (Sept - June) at 8:30 pm at the Brookside School Cafeteria.



The Junior League of Bergen County

The JLBC is an organization of women committed to promoting voluntarism and to improving the community through the effective action and leadership of trained volunteers. Its purpose is exclusively educational and charitable. There is a rolling admission program. Membership in the JLBC is open to any woman who shares in this commitment. The only requirements for joining are that a woman be under 40 years of age and live in Bergen County or its vicinity.

La Leche League of Ramsey

LaLeche League began in 1956 and now stands as an internationally recognized authority on breastfeeding. The Ramsey Group services Ramsey, Allendale and surrounding towns. Both day and evening meetings are held each month. The Group Leaders are trained volunteers who have nursed their own babies and have learned to help other mothers with breastfeeding questions and problems. Group meetings feature open-ended discussions about breastfeeding and related aspects of childcare.

Lee Memorial Library

The first Allendale Library was founded in 1901 with approximately 600 books. At that time, the Library was only open June through August and was staffed by volunteers. Operating costs were covered by annual dues, borrowing fees and private donations. In 1926, the Library moved to its first permanent location, a small brick building at the corner of West Allendale avenue and Franklin Turnpike. The Allendale Free Public Library was established in 1952. Later in the same year, it was renamed the Lee Memorial Library in memory of William C. Lee who, along with his wife, Mary K. Lee, were generous benefactors of the library. Over the years, magazines, paperback books and newspapers were added to the circulating collection. In 1970, the Library joined the Bergen County Cooperative Library System. The Friends of the Library organization was formed in 1971. The Library was automated in 1988, joining 68 other libraries and providing residents with access to over four million items.

North Jersey Stamp Club

The Club is a 56 year old non-profit organization. Its 35 members gather the second and fourth Wednesdays of each month at 8:00 pm to share and extend information and interest in stamp collecting.

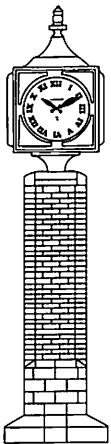
Northern Highlands Regional High School

Established in 1962, as a regional high school serving Upper Saddle River and Allendale the first phase of construction was completed in the summer of 1965. The doors opened in September, 1965 to students in grades 9 through 11 only (Seniors that year finished their high school experience at Mahwah High School). The enrollment in 1965 was 618 students, with a faculty of 47 and 2 administrators. The first graduation was held in June, 1967.

The NHRHS Board of Education consists of 9 members, 5 from Upper Saddle River and 4 from Allendale. The Board meets on the second Monday of each month at the High School at 8:00 pm.

The Saddle River Valley Cultural Center

The Center was formed in 1982 to present cultural events and to increase awareness and appreciation of the fine arts. The organization is preserving, as an historical site, the old Saddle River Methodist Church built in 1842. The renovated building is used for art lessons and art shows, concerts, dance lessons, theater presentations and meetings. All classes and events are open to the public. The Center is a non-profit organization serving Allendale, Ramsey, Mahwah, Montvale, Hohokus and the Saddle River Valley.



Northern Highlands Home & School Association

The Association is an active organization made up of parents and teachers. Its purpose is to encourage excellence in academics and to promote the well-being of the students by supporting school sponsored activities and informing community members through programs and its newsletter. The proceeds of its fund raisers are donated to the Scholarship Fund, school departments and extracurricular groups. Meetings are held on the first Thursday of every month (Oct - June) at 12:30 pm in Room 116-118 at the High School.

The Valley Hospital Auxiliary Allendale Branch

Allendale women were among the original group that met in the Red Cross House in Ridgewood in 1949 to organize the Auxiliary. The Allendale Branch currently has 59 members. Volunteers provide service to the hospital in the following functions: clerical; patient transport; operation of Kurth Cottage (gift shop & restaurant); and various fundraising events (bridge tournaments & poinsettia sales).

Volunteer Center of Bergen County

The Center is a private non-profit organization that recruits, interviews and refers volunteers from the community and workplace to serve over 300 social service and cultural agencies in Bergen County. Volunteer services are also provided directly by Center programs that help the abused and neglected children and their families, and senior citizens and the disabled both in the home environment and in nursing homes.

Women's Evening Club of Allendale

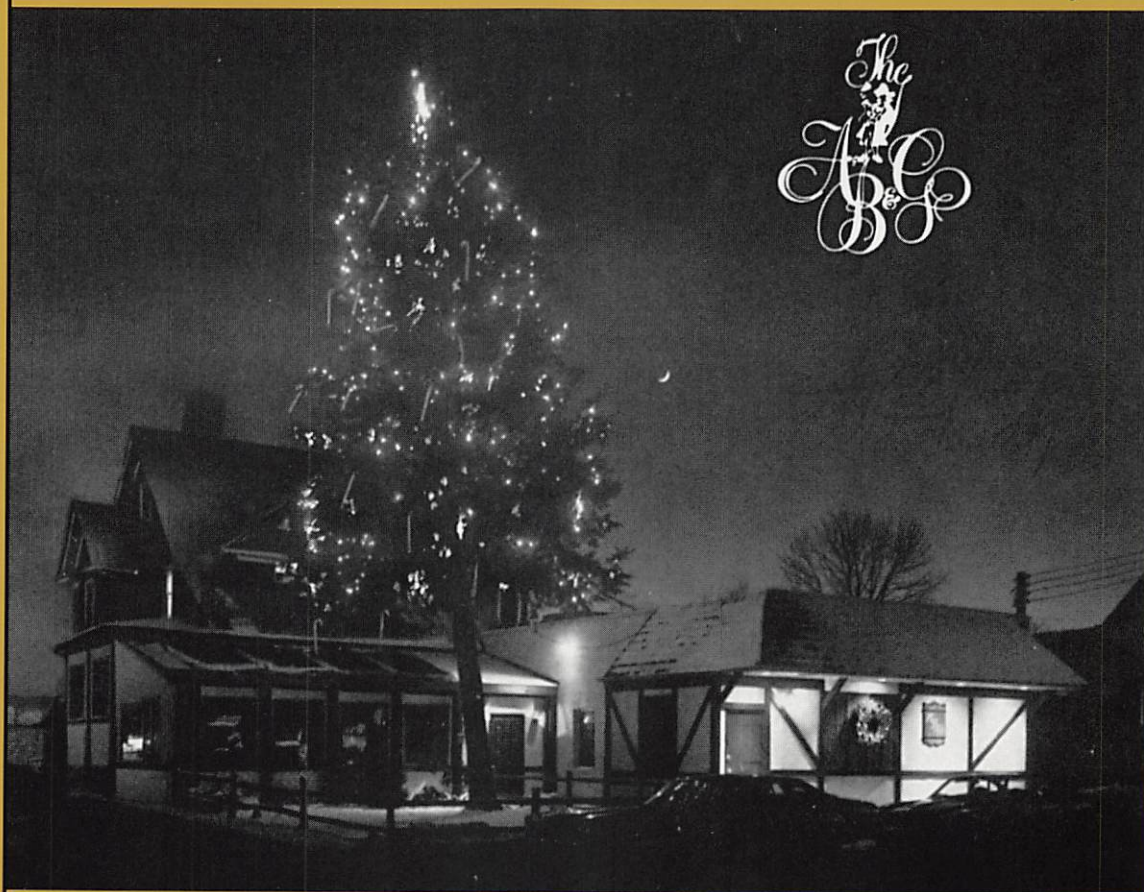
The Club meets the first Wednesday of each month at 8:00 pm at the Borough Hall. Membership is open to all residents of Allendale. The organization sponsors scholarships for all schools in Allendale as well as supporting local services such as the Police Department and the Ambulance Corps. Also, local charities such as Tomorrow's Children and the Alzheimer's Disease Association are among the many recipients of funds raised by the Club.

XYZ Senior Citizen's Club of Allendale

Started in 1974, the club currently has 70 members. The primary purpose of the Club is to provide an environment of togetherness in addition to aid and service to fellow senior citizens in need. Also provides entertainment via guest speakers at meetings and day bus trips to various points of interest in the surrounding area. The Club also maintains an active interest in legislation and trends which pertain to senior citizens.

Sponsors

Best Wishes Allendale on Your 100th Anniversary!



The Allendale Bar & Grill

67 West Allendale Avenue
Allendale, NJ 07401
327-3197
Since 1935

The Mahwah Bar & Grill

2 Island Road
Mahwah, NJ 07430
529-8055
Since 1992

Luncheon — Dinner — Cocktails
Open 7 Days

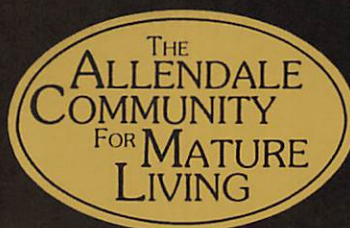


*With
Grateful Appreciation
to the
Allendale Chamber of Commerce
and its Members
for their
Financial Support and
Encouragement*



A Special Acknowledgement from
The Allendale “100” Committee

**A Tradition of
Quality and Elegance**



Three Levels of Mature Living

"Comprised of three separate residences, the Allendale Community addresses all mature adult lifestyles . . . from the active and independent to complete 24-hour care. No matter which facility you choose, you'll appreciate the quality and commitment that sets the Allendale Community apart from the rest."

H. R. Giancarlo, M.D., F.A.C.S.
President

THE ATRIUM — Residential Care

CARLTON COURT — Assisted Care

ALLENDALE NURSING HOME

(201) 825-0660

85 Harreton Road • Allendale, NJ 07401 (off Route 17 South)





ALLENDALE NEWCOMERS

*Proudly
welcoming newcomers
and supporting
the town of Allendale
for over 25 years*

Your
Police Department
salutes
Allendale's Centennial!



Chief Robert L. Herndon
Detective Lt. Edward Tellefsen
Sergeant Walter DeBrock
Sergeant Alvin McCarthy
Sergeant George Martin
Sergeant Michael Shanley
Officer Andrew Baum
Officer George Scherb
Officer Todd Griffith

Officer Joseph Galasso
Officer Ralph Iannone
Officer John Mattiace
Officer Joseph Carey
Dispatcher Joan Walker
Dispatcher Steve White
Dispatcher Scott Kuenzel
Admin. Asst. Patricia Mullen



Allendale

*In celebration of your centennial,
the Allendale Woman's Club
Sends their best wishes
for a Happy 100th Anniversary.*

“Unity in Diversity”

Motto of the New Jersey State Federation of Women's Clubs

In spite of, and maybe because of our differences, we in the Allendale Woman's Club, have formed a union which has been able to hold to tradition in times of change – and change in the face of tradition.

We have created a strong, successful organization within and for the benefit of the community...a community of which we are very proud to be a part.

Now, as Allendale celebrates her 100th anniversary, we are even prouder to share in the special blend of change and tradition which represents the “unity in diversity” of Allendale.

The New Jersey State Federation of Women's Clubs also celebrates their centennial this year, so we feel doubly honored to be part of these two great “communities”.



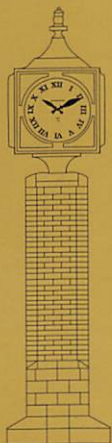
Allendale

*Congratulations
on
Your Special Day*

Black
MILLWORK CO., INC.

"Leadership Thru The 90's"

230 West Crescent Avenue
Allendale, NJ
934-0100



“Lest We Forget”

*A Special Salute
to Both*



Post 204—Since 1924

VFW



Post 10181—Since 1988

*For their continuing sponsorship
of the annual Memorial Day Parade,
and on-going support of
veterans, their families and veterans hospitals—
and, in particular,
for keeping the memory
of those who gave the ultimate sacrifice
still clearly in our hearts and minds.*

CADAPULT
Graphic Systems, Inc.

and

*Nancy and Michael W. Levin
are pleased to be a part of
the community.*

Happy Centennial!



The Careys of East Crescent Avenue

*264 Total Years of Allendale Residency

William R. Carey *41

Columbia University
Naval Aviator (World War II)
Pacific Theater
President and Co-Founder
William R. Carey & Co., Inc.
(International Reinsurance Intermediaries)
Governor, N.Y. Hanger
Ancient Order of Quiet Birdmen

Hertha Birner Carey *41

Immigrant (Germany 1924)
Republican County Committeewoman
Allendale Board of Health
Registered Nurse
Bergen Community College, BS Nursing
Dominican College, BS Psychology
New York University, MS Nursing
Meals on Wheels Volunteer

Hertha "Toots" Carey Codey *29

Lenox Hill School of Nursing
President and Founder
The Gender Gap, Inc.
(Corporate Consultant, Trainer
Author)
Vice President, Toast of
the Coast Toastmasters
Volunteer HIV Counselor

William R. "Max" Carey, Jr. *16

Columbia University
University of Chicago, MBA
Naval Aviator (Vietnam)
124 Carrier Missions
"V" for Valor with Two Stars
President and Founder Corporate
Resource Development
(Management Consultants)

Christopher J. Carey *20

Princeton University
Wrestling Mid-Season
All American 1974
Bergen Bruisers Rugby Club
President and Founder
Datatec Industries, Inc.
(Computer Systems Mfg.)
Young Presidents Organization

Michael J. Carey *28

Princeton University
Bergen Bruisers Rugby Club
Vice President and Co-Founder
William R. Carey & Co., Inc.
Holiday Observers
Mid-Life Crisis Band
Allendale Republican Club
Centennial Fundraising Cmt.

Frank J. Codey III *15

Fairfield University
Managing Director
Marsh & McLennan, Inc.

Susan Estes Carey

Pensacola College
Teacher
Social Services Volunteer

Mary Weaver Carey *10

Indiana University/Ramapo College
President and Founder
Plan C Corp.

Karen Farnan Carey *6

Skidmore College
President Newcomers Club—1992
Centennial Gala Committee

Frank J. Codey IV *13

Boston University
Vice President Bear Stearns

Elise E. Carey

Columbia University

Amie L. Carey

University of Southern California

Michael J. Carey, Jr. *6

Bonnie J. Codey

Gettysburg College

Caroline E. Carey

Christopher J. Carey, Jr.

Maggie L. Carey *6

Kyle A. Codey

William R. Carey, III

Peter A. Carey *6

Hertha "Tres" Codey *12

University of Hartford
Monmouth College, MAT
Pursuing PhD

Carey Ann Codey *15

University of Tampa
Manager Bazooka's Restaurant

The Allendale “100” Committee

*Pays Tribute
to the Churches of Allendale:*

**Archer United Methodist Church
Cavalry Lutheran Church
Church Of The Epiphany, Episcopal
Highlands Presbyterian Church
Roman Catholic Church Of The Guardian Angel**

*And all the other churches and synagogues
that provide pastoral guidance to,
and serve the spiritual needs
of Allendale residents.*

