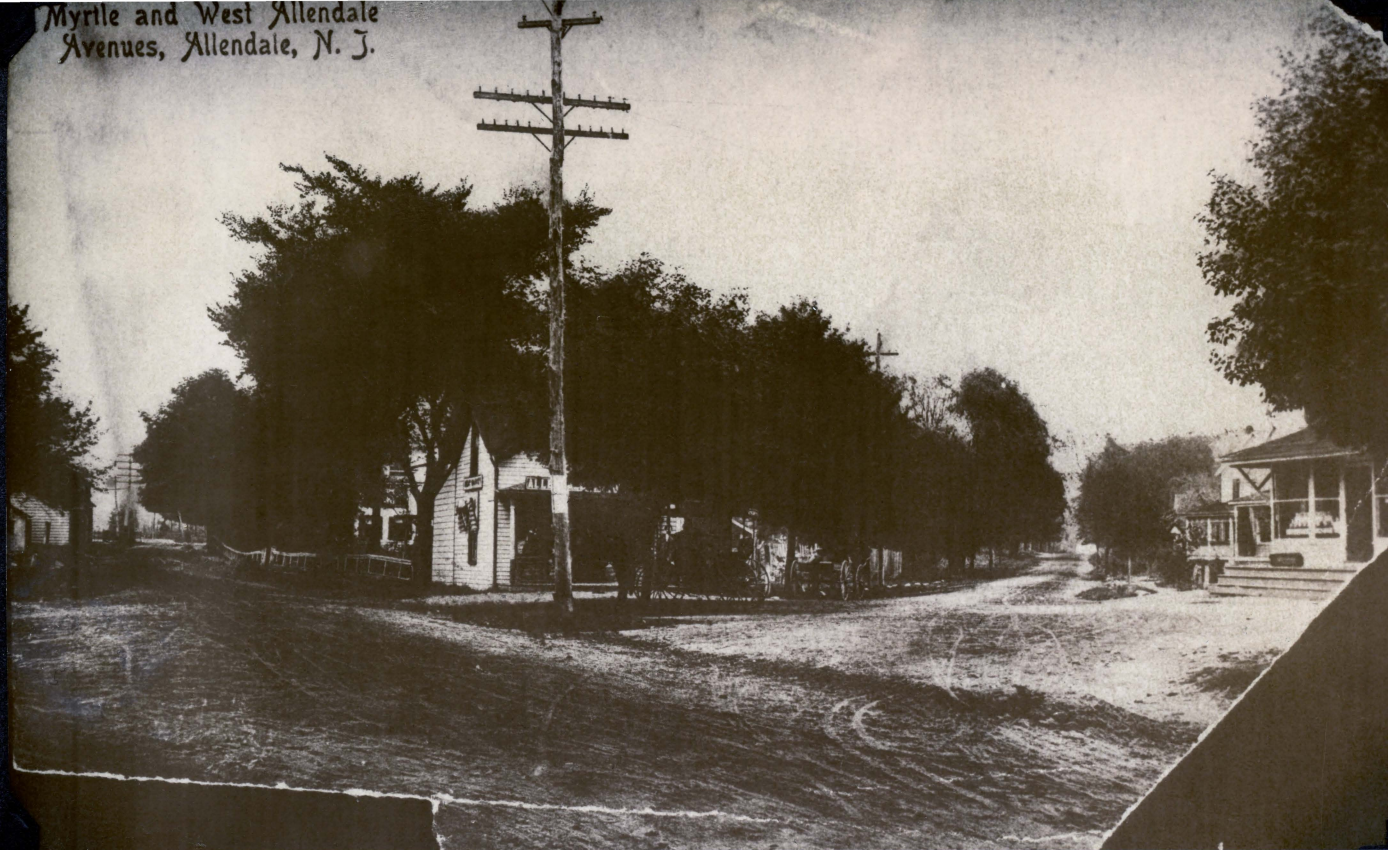


Myrtle and West Allendale
Avenues, Allendale, N. J.



"Another view of Simpson's Meat Market with Winter Bros. General Store and P.O. (comb.) at the right." ---Violet W. Straussman.

This view is what you would have seen in 1905-1909 had you been standing on the sidewalk approximately in front of today's Allendale Liquor Shoppe, looking westward along West Allendale Avenue (branching off to the left) and Myrtle Avenue (branching off to the right.) The Allendale Florist Shop is located today on the site of the Meat Market in the center of the view. Behind Winter's General Store, shown on the right, can barely be seen the two buildings (the former Kornhoff Bakery and Max Scholz's barber shop) that burned to the ground on December 26, 1909.

In 1884 Garret Hopper Winter formed a partnership with Gus Leamon and opened up a new grocery-general store in Allendale. Later, when this partnership dissolved in about 1894, a new partnership was formed and the general store operated under the name of Winter and Christopher. This partnership, too, soon dissolved and Garret H. Winter, with his son, John W. Winter, continued to run the store. When John's sons, Herb and Bill Winter took over the store in 1916, it became known as Winter Brothers'. In 1948 the brothers discontinued their line of groceries and expanded their hardware line. The business is still in the family today, run by Bill's son, Cliff Winter.

John W. Winter served as Postmaster of Allendale from 1913 until 1922 and during this time the Post Office was located in his general store, in the building shown on the postcard. In 1931 the Winter Building was moved to High Street (where it still stands today) to provide room for the construction of a new Winter Brothers Building. By September of 1932 the Winter Building was completed and housed, as well as Winter Brothers General Store, a Great Eastern Store.

In 1936, the Post Office again found itself housed in a Winter Building, in the part of the building today housing Allendale Auto Parts. Here the Post Office remained until June 8, 1963 when it opened for business in its new home, the present Post Office, built on the same site as the original Winter Building shown on the postcard.

----Patricia A. Wardell