

Allendale Historical Society sets pictorial presentation

Allendale - After years of inactivity, the Allendale Historical Society has reorganized.

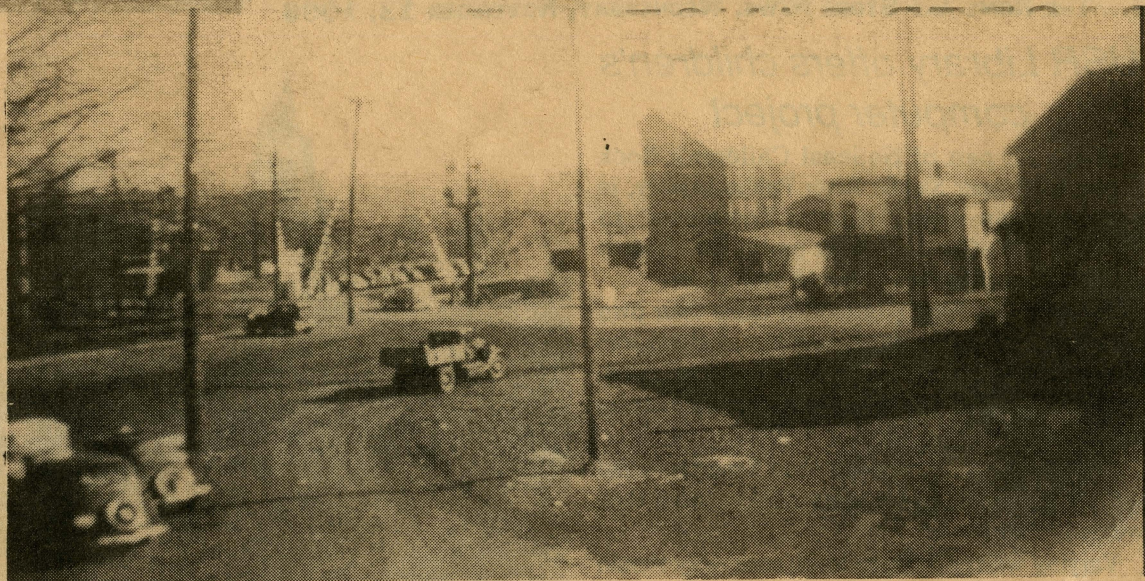
Don Strauss is president, Judy McKim, vice president, Ed Murray, secretary, Joanne Hart, treasurer, Pat Wardell, newsletter editor, trustees are Ron Morris, Beth Fylstra and Tim Fenton

The organization has planned several informative programs. The first will be a slide presentation entitled, "Views of Allendale, Through the Years; Then and Now."

The pictorial story was compiled by Pat Wardell who also wrote, "Allendale: Background of a Borough."

The public is invited to the free program which will be held on November 19 at 8 p.m. at Highlands Presbyterian Church located on the corner of Franklin Turnpike and East Orchard Street.

Books will be on sale that evening and Pat Wardell will be available to sign copies.



A view looking west from the Allendale Fire House in 1937. Pictured is the Park Avenue Rail Road Crossing connecting with Allendale Avenue before the crossing was closed to vehicular and pedestrian traffic in the late 1930s.



The Allendale Hotel (right) in 1937. Beyond the hotel is the old Allendale Fire House, which has been replaced with a modern building.