



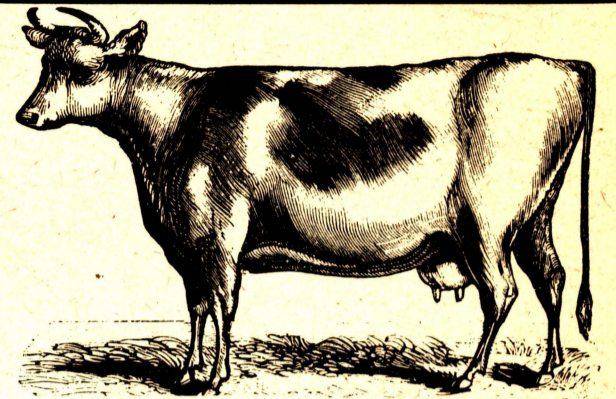
**Pot-pourri
from the
Garden**

Pick 10 cups rose petals, in the morning at the peak of their fragrance. Dry thoroughly in any room indoors. Add 1/2 ounce each ground cloves, cinnamon and allspice, 3 ounces orris root.

Mix well in a crockery bowl. Cover lightly and allow to mellow for several weeks, stirring now and then with a wooden spoon. With this mixture you can add jasmine, rosebuds, geranium leaves, rosemary, marjoram or any other fragrant flower. Sniff constantly, always keeping the rose scent predominant. To enhance the fragrance add drops of essential oil of roses.



What? No Boro Hall? Or Ambulance Building? Or Police Station? Only the Little Green Schoolhouse existed on the West Road in U.S.R. across from the Bindschaedler residence in this early 1900s photo showing the Bindschaedlers feeding a hungry brood.



On the quality of milk for making butter . . .

The first requisite is to have a good cow. One with high hips, short forelegs and a large udder is to be preferred. She should have a good pasture not far distant. Feed her once a day with the waste from the kitchen, adding to it about a pint of Indian Meal. Take care that nothing is given to her that will injure the milk such as turnips and parsnips.

F. H. STORMS,
TRAVELING GROCER.
Dealer in
GROCERIES,
FLOUR,
FEED, &c.,
SADDLE RIVER, N. J.

R. V. ACKERMAN,
Dealer in
GROCERIES,
DRY GOODS, FLOUR, FEED,
GRAIN, LIME,
COAL, FERTILIZERS, &c.,
ALLENDALE, N. J.

CHURCH SERVICES

Saddle River Ref. Church
Isaac Van Kampen — Pastor

Sunday Services

Morning	10:30
Evening	7:30
Sabbath School	9:30
Prayer Meeting	Thurs. Eve.

Strangers Welcome

Zion Evangelical Lutheran Church
Charles A. Hutton — Pastor

Sunday Service

Morning	10:30
Sabbath School	9:00
Ladies Social Union	Wed Eve. 7:30

Little Zion M.E. Church
Joseph H. Ware — Pastor

Sunday Service

Morning	10:00
Sunday School	9:00

Archer M.E. Church
George E. Dickinson — Pastor

Sunday Service

Morning Service	10:30
Sunday School	9:30
Ladies Aid Society	Tues. Eve.



**The 1790
Kitchen**

The little cakes are in the beehive oven, the hen is roasting in the tin kitchen, the coriander ginger cake hangs from the crane in the Dutch oven, and the orange cakes hot from their iron pans are on the board waiting to be glazed with the salamander.

BUCK'S PORK STORE

Quality Meats
and Groceries
available
with
friendly service
327-0657
Saddle River

The finest wines
and spirits
to grace your table
at
The most modest
N.Y. State
prices!

CORDIALLY YOURS
WINES & LIQUORS

300 East Saddle River Rd., Monsey, N.Y.
(2 miles north of Lake St. just over N.Y. border)
914-352-4848
Mon.-Thurs. 9 a.m. to 8 p.m. Fri. & Sat. 9 a.m. to 10 p.m.
No Deliveries in N.J.

**The
Country
Shop**

Old Fashioned
Prices
for our
Summer Sale

86 Allendale Ave. Allendale, N.J
327-5080



Milton Packer stands by the gas pumps in 1935 and proudly shows visitors what remains of the old foundry and mill equipment from Packers. (Today the building houses Joseph Murphy Real Estate and Petit Point Junction.) At left is the Will Packer home, now the Coach House.

Early Businesses

Continued from page 1)
a sparkling rivulet and bordered on both sides with a row of parallel hills, the slopes of which are cultivated and the tops crowned with a rich forest-growth." It sounds quite restful, doesn't it? And yet the Industrial Revolution did pass through this sylvan valley, however quickly, and its brief tenure saw the rise and fall of many interesting businesses.

Stills and Mills

From the time the first

settlers arrived at the beginning of the 18th Century, there had always been those businesses necessary for the subsistence of the pioneers - the farms and mills (and stills) and taverns. There were grist mills, saw and turning mills, and cotton and woolen mills. William Ward had a tool factory, and there was a short-lived mill for cutting basket splints. There was Mead's hat factory and Shannon's shoe factory.

David I. Ackerman started the first foundry, or

the "Old Trip Hammer" as it was called, where tools, plows, stoves and other agricultural implements were made. And of course, there was a town blacksmith, in both lower Saddle River and Upper Saddle River, a cobbler, a basket factory, and a tobacco business where cigars were manufactured.

Upper Saddle River was a series of small ponds with water-power grist and saw mills and a few cider mills. Its one big industrial boom was the operation of a broom factory on the West

Road about the time of the Civil War. A shortage of muskets put brooms in great demand for the training of troops.

In Saddle River the Esler Florist business, started in 1872 by Henry and George Esler, flourished for a period as a supplier of plants, flowers, and seeds for a wide area.

Railroad Boom

In 1848 the Paterson and Ramapo Railroad opened between Suffern and Jersey City with a stop at

Ramsey which was a great boon for the farmers, particularly the strawberry farmers who had to get their product to market quickly. There were two attempts to bring the railroad right into the Valley but nothing has ever come of them. In 1872 the Old Stone Church granted to the "Midland Railroad" right-of-way through the church land provided the company keep a good fence on either side of the road.

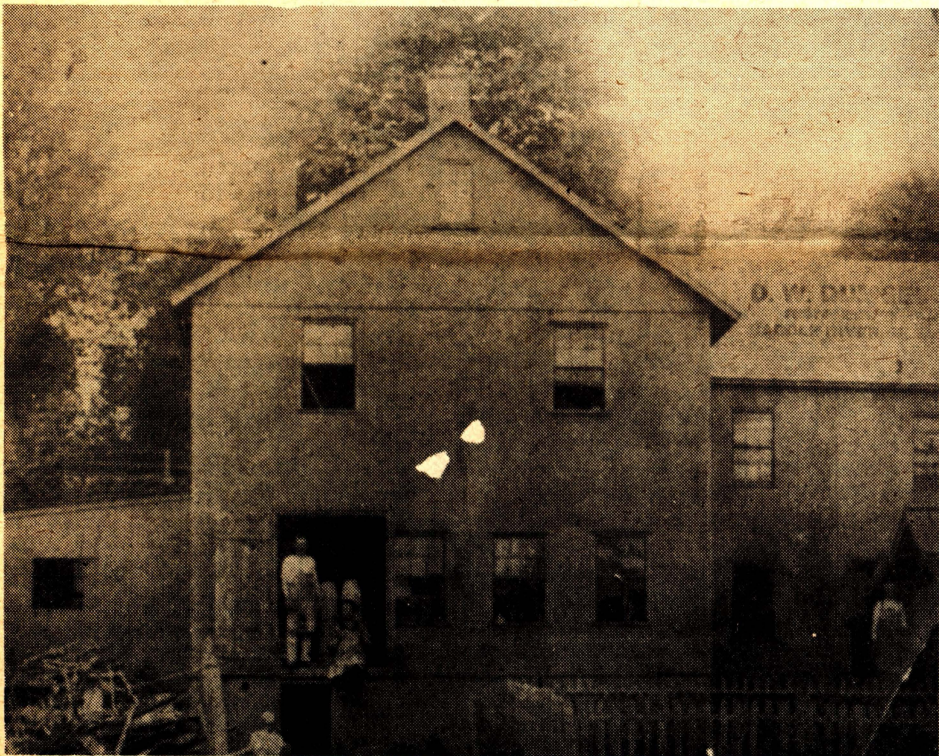
The continued seclusion of the Valley coupled with

the fact that the Saddle River is a delightful stream capable of powering many fine little mills but hardly strong enough to support the demands of large industrial facilities seems to insure that the Saddle River Valley will remain a tranquil place to live far from the madding crowd. And there are far-sighted residents who feel that in years to come the Valley will be a haven for persons hungry for peace and open spaces.

by Kay Yeomans



An early van that guzzled no gas. F.H. Storms & Son of Saddle River advertised for furniture removed and other odd jobs.



The basket factory in Saddle River was an important area business in the late 1800s when the Valley was touted as the "strawberry capital" of the country.



The Esler Greenhouses in Saddle River on East Allendale Road provided flowers, plants and seeds to a wide market in the late 1800s.

The Colonial Door of Saddle River being closed for the Winter, Nan Pardee is serving dinners week-days and Sundays, to a limited number of guests at her home, 311 South Maple Avenue, Ridgewood. Week-day dinners, 6 to 7:30 P. M., 85 cents; Sunday dinners, 1 to 2:30 P. M., \$1.00. Special weekly rates, \$5.00; otherwise phone for reservations, Ridgewood 6-0866.

"SURA CURA"

FOR THE BLUES,

VISIT

SADDLE RIVER GREENHOUSES*

HONEY

COMB OR EXTRACTED In Any Quantity

Pure Italian Bees and Queens Write for Prices and Sample

C. H. MERRITT Saddle River, N. J.

"COLONIAL DOOR"
NAN PARDEE
Saddle River, N. J. Tel. Saddle River 798
At East Allendale Ave. bet. East and West Saddle River Rds.
LUNCHEONS - AFTERNOON TEAS -
SATURDAY AND SUNDAY NIGHT SUPPER
AND SUNDAY DINNER, \$1.00
"The Colonial Door" is closed on Mondays

WILLIAM DEWSNAP ARCHITECT
AMERICAN TRACT SOCIETY BUILDING
150 NASSAU ST. NYC.
If you intend building, HOUSES FOR THE COUNTRY AND "SVEVRB" will interest you; it is a portfolio of perspective sketches and floor plans of up-to-date houses in the Colonial and picturesque styles, costing from \$2000 to \$12000, together with advisory chapters and some interior suggestions.
Will be mailed on receipt of ONE DOLLAR, or the original sketches may be seen at the above office.

MARTIN SMITH,
BASKET MANUFACTURER,
SADDLE RIVER, N. J.
—All Orders Promptly Filled.—

This is to assure our many patrons, that for the coming season the Saddle River Polo Fields will continue under the management and control, as heretofore, of the
Saddle River Polo Fields, Inc.
Signed WILLIAM J. BOND, Owner
(Sole agent in charge)
Dated May 13, 1926

Dick Schlott is a House SOLD Word



RICHARD L. SCHLOTT REALTORS

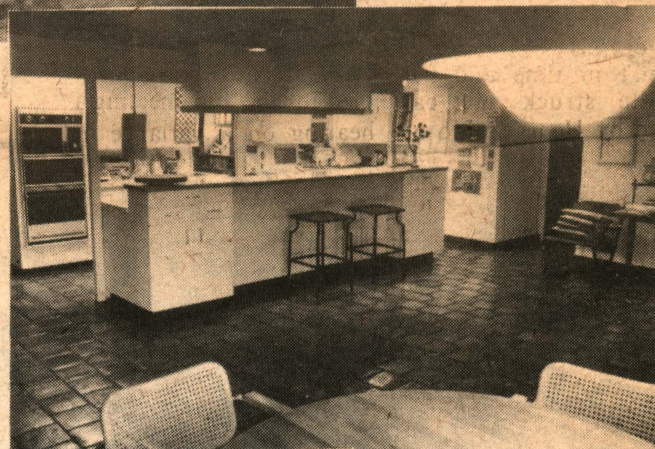
is a recent addition to the Saddle River scene.

However, the office building has a long history in the community. Built in the 1800s, it served early in this century as John DeBaun's general store as well as the village post office.

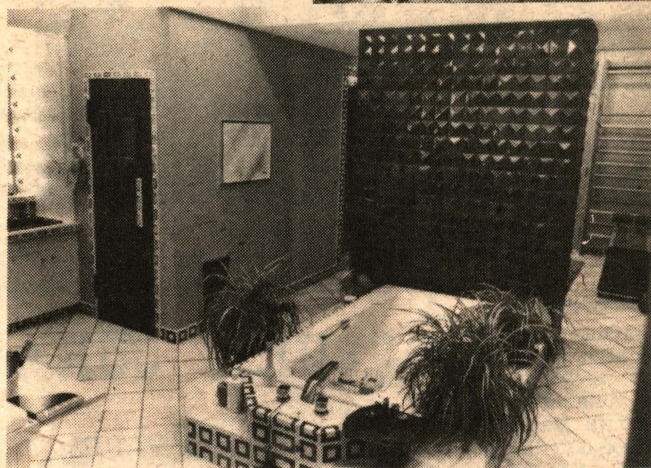
A few months ago, this "little" building became "home" for the seventh office of Schlott Realtors. The tradition that makes our building special is apparent in our very professional sales staff. We pride ourselves on our ability to serve peoples' real estate needs. At Schlott Realtors, not only is the word "SOLD" important but the meaning of dignity is assured.



Dramatic Living Room



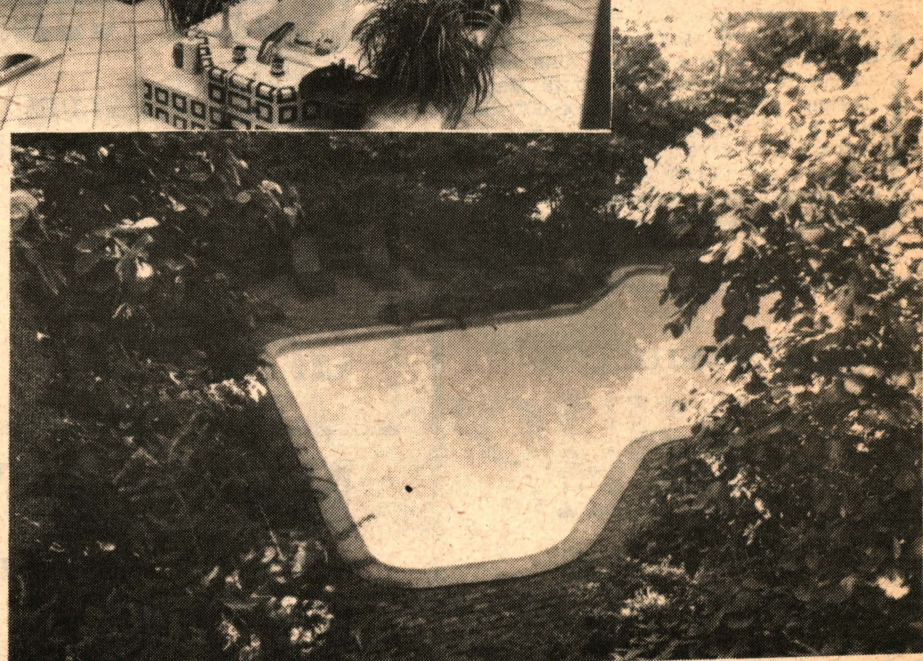
Epicurean Kitchen



Master Bath with Sauna & Steam Room

**From the past, with its priceless charm,
To the ultra modern of today,
We present this magnificent home:**

Originally a carriage house, amended by creative designs to retain the beauty of yesteryear and encompass the qualities of contemporary living. A breathtaking Allendale setting, amid towering trees and professional landscaping. An inground pool, tennis court and gracious patios are but a few of the extravagant amenities. An Epicurean kitchen, with Butler's pantry, enhanced by quarry tile flooring, will delight the connoisseur. Quality, taste and tradition, insure a delightful experience, designed for the most discerning, and offered in the \$300,000s.



Oakland
451 Ramapo Valley Rd.
337-7600

Franklin Lakes
Corner of Colonial Road & Franklin Avenue
891-7600

Ridgewood
7 West Ridgewood Avenue
445-9400

Wyckoff
364 Franklin Avenue
891-0606

Ramsey
150 East Main Street
825-7700

Woodcliff Lake
135 Broadway
391-1030

Saddle River
67 E. Allendale Rd.
327-5600

Relocation Center
Corner of Colonial Road & Franklin Avenue
891-0300