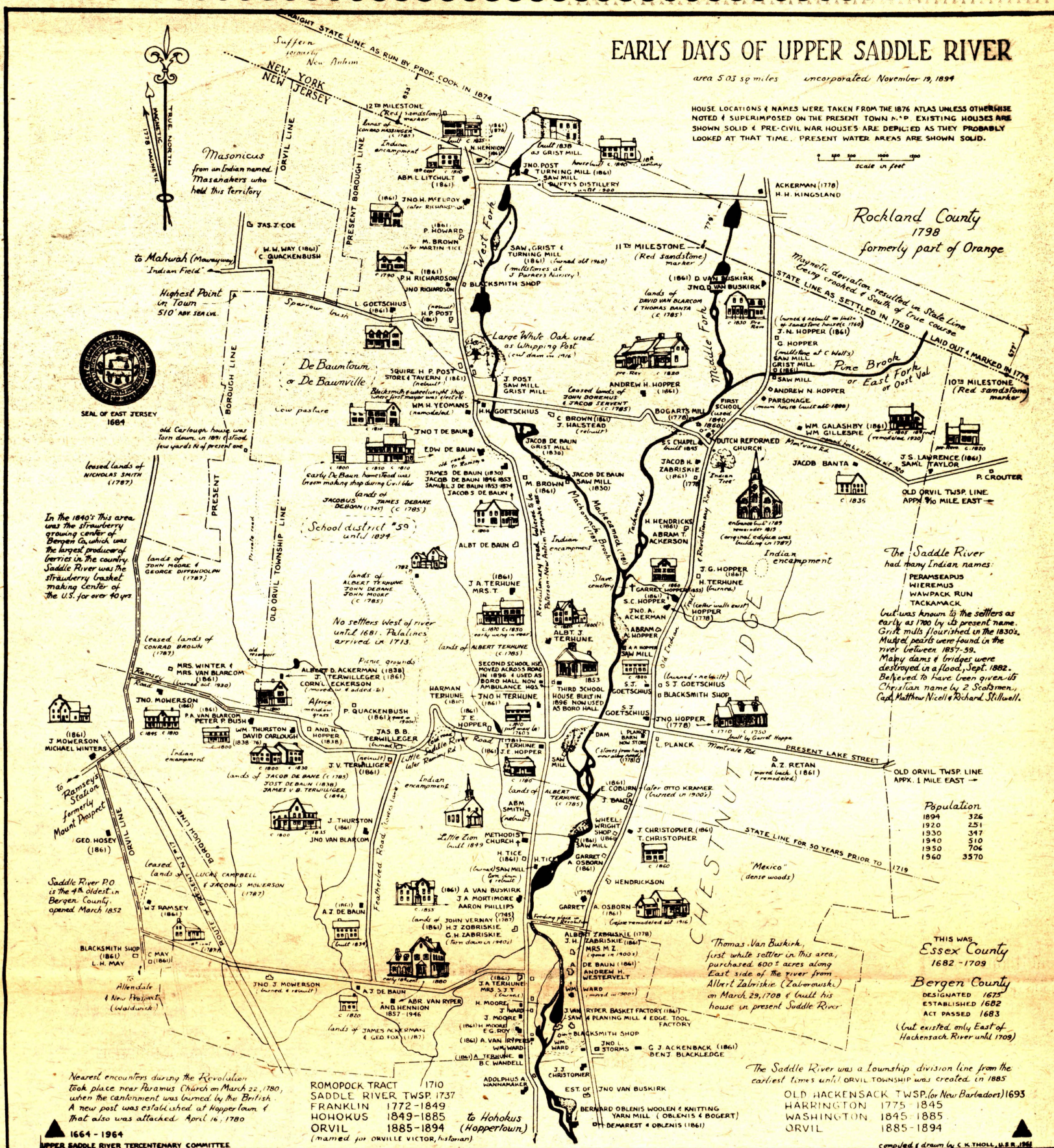


Taxes Down From 1922

Explore local history at the Upper Saddle River Library. The New Jersey collection contains the 24 volume set on life in the state published by the N.J. Historical Society. The three volume work, "History of Bergen County," by Frances Westervelt, contains a brief section on Upper Saddle River that has some interesting nuggets of information. For instance, before you bemoan today's high taxes, consider this. In 1922, when the net valuation of taxable property in the borough was \$328,502 (it is about \$300 million today), the tax rate was \$2.62. Nearly 60 years later, it has are on file at the Library. In the field of audio-visuals, the Library has several Upper Saddle River may be found on the shelves as well as a history of Rockland County by resident Wilfred Talman. The Library has old newspaper clippings to browse through as well as every issue of **The Town Journal** since November, 1977.

Those with stamina might like to muddle through the last five years of the minutes of the Mayor and Council, which are on file at the Library. In the field of audio-visuals, the library has several interesting items. The first is an hour long 16mm film on Upper Saddle River. Walk down memory lane with your family or club—a projector is available for your use at home. Thanks to the Historical Society, a number of oral history tapes are in the Library's collection. Local numeraries such as Joe Powers, Cornelius Berdan and others share their recollections with you. The Library has a sense of history too!



July 4th at Anona Park in the 1930s. Families had the same table for the whole season and adorned their space with canopies, iceboxes, cupboards - everything but the kitchen sink. And tops for men was a house rule.

A Conundrum Banquet

WILL BE GIVEN BY THE LADIES OF THE
Attendale Methodist Episcopal Church,
IN ARCHER HALL, ON
Wednesday Evening, March 1st, 1893.

DOORS OPEN AT 7 O'CLOCK. SUPPER AT 7.30 O'CLOCK.
ADMISSION, TEN CENTS.

Menu

- | | |
|--------------------------------------|-----------------------------|
| 1 New England Brains. | 2 A Couple on Whom we Lean. |
| 3 Women's Grit. | 4 All Things to all Men. |
| 5 Intoxicated Bovine. | 6 Perpetual Motion. |
| 7 The Last Lay of the Minstrel. | 8 A Brown Staff. |
| 9 Chips from an Irishman's Workshop. | |
- RELISHES.
- | | |
|---|----------------------|
| 10 What a Young Man gives his Sweetheart. | |
| 11 Appetite Whetstone. | 12 Salamagundi. |
| 13 Slice of the Moon. | 14 Elevated Felines. |
- PASTRY.
- | | |
|---------------------------------|--------------------------|
| 15 Nutbrown Ringlets. | 16 Cake of Monkey Fruit. |
| 17 Malay Colored Confectionery. | 18 Maid of Orleans. |
| | 19 Fire Cake. |
- BEVERAGES.
- | | |
|---------------------------|---------------------|
| 20 Boston Overthrow. | 21 Arabian Extract. |
| 22 A Wise Man's Beverage. | 23 Kid's Food. |
| 24 Spring's Offering. | |
- FRUITS.
- | | | |
|-----------------------------|----------------|----------------------|
| 25 Origin of Sauce. | 26 Twin Fruit. | 27 Fruit from Spain. |
| 28 Chips off the Old Block. | | |

Five Dishes, — Twenty-Five Cents. See Page 9

Antique



Journal

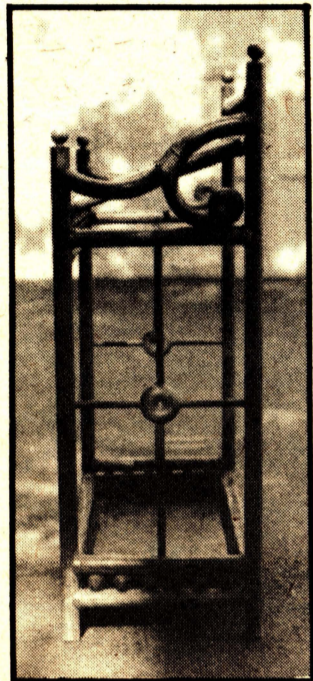
Bentwood

by Ruth Brandrup

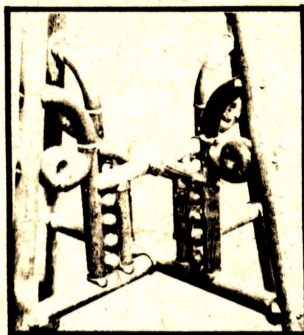
One of the most popular and interesting furniture styles in use during that eclectic last quarter of the 19th Century was that of Bentwood.

The steaming and bending of wood was known to wheelwrights

This cabinet maker from the Rhineland section of Europe gained quick fame through his skill and innovative designs. He was



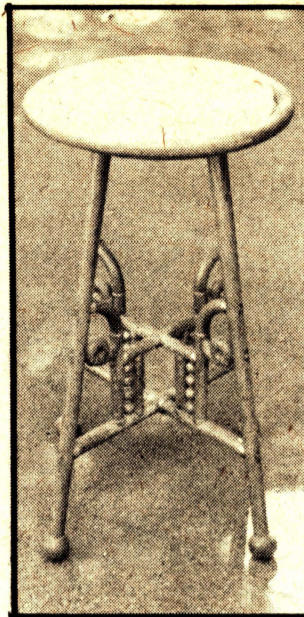
brought to Vienna by Chancellor Metternich to work in the Lichtenstein Palace. The 19th Century saw Thonet opening a shop for the mass production of his furniture. Lightweight, strong, comfortable and curvy, it gained instant success both for domestic and commercial use. His



patent expired in 1869 and a host of imitators followed. J.J. Kohn is one of the best known.

Examples of Thonet's work exist today along with a multitude of copies. The extravagantly curvilinear rocking chair, along with his upright circular hall tree for coats and hats have been copied and imported from Spain in great quantity. His original pieces often are marked with a paper label with his name and factory, his name burned or stamped into the wood, or both. These marks are found on the underside of chair rims.

A trade journal within the past two weeks carried a midwestern advertisement, complete with picture, of a "signed" Bentwood high chair, exactly as the one pictured. The price in that area was \$250. Locally, if and when available, they may be found for half of that figure. In the past few years, I have purchased two for that amount, along with a "signed" child's armchair. Both high chairs



are now serving their original purpose, with tiny contemporary occupants.

Pictured also are two other examples of these fascinating bentwood forms: an umbrella stand and a plant stand. A number of Bentwood pieces, not necessarily Thonets, survive. Perhaps most common are the familiar side chairs which were used frequently in restaurants, ice cream parlors and other commercial places requiring large numbers of chairs.

Think not because the eye is bright,
And smiles are laughing there,
The heart that beats within is light,
And free from pain and care.

Anonymous.

AN AUTUMNAL WAIL.

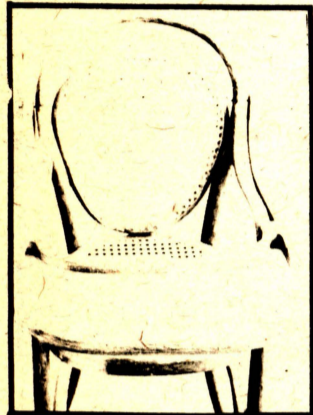
Tho' lingers yet the Summer's afterglow,
Grim Winter's distant footsteps smite mine ear :

Farewell to flowers, to breezes soft and low,
Blue skies, and robin's earol clea;

Oh, days of drifting snow, of gloomy sky,
Of howling wind, of raven's mournful note!

Thine advent I await with grief, for I
Shall have to buy an overcoat.

WILL CAREY.



very early. This construction technique was a necessary step in the building of carts, wagons and carriages. It remained for Michael Thonet (as in sonnet, with silent "h") to elevate this process to an art. In retrospect at least, his work has attained status in that Harvard University's Carpenter Center for the Visual Arts displayed a group of Thonets furniture in a special exhibit during the 1960s.



Kathy James of Samp Mill Farm has spent years collecting and decorating her own historic home with antiques that might have been part of the early Dutch households in our area. Above are two such pieces. The Kass was a catch-all Dutch cupboard that would have stood in the main room to be used for storing clothes, dishes or whatever. Next to it is a banister back chair. Both are items found in museums and restorations as standard examples of early Dutch decor.

Historic Homes Assoc.

Welcomes New Members

The New Jersey Historic Homes Association is still accepting members with pre-Civil War homes and now will be open to a wider membership.

The group holds tours of member homes and other social activities. The next full membership meeting will be held Sept. 23 at the Pascaek Historical Society.

For information please call Karen Collins, 391-0161.

In the country, where grain is raised, it is a good plan to teach children to prepare and braid straw for their own bonnets and their brothers' hats.

ANTIQUES

M & M ANTIQUES & COLLECTIBLES
8 Franklin Ave. Ridgewood 445-9077

Upstairs at the Brownstone Mill
DOROTHEA'S BYEGONES
THE CORNER SHOP
THE WHISTLE STOP
THE ANTIQUE LOFT
Paterson Ave. & Goffle Rd. Midland Park, N.J.
Wed., thru Sat. 10:30-5 652-9602

Past Pleasures Are Today's Treasures at
Remember Me Antiques
Specializing in Antique Jewelry
The Antique Mall Chestnut Ridge Plaza Mon.-valed 391-6180
Thurs. thru Mon. 11-5:30

GLIMPSE OF THE PAST
Rush & Cane Chair Seats
Antiques & Paper Collectibles
The Antique Mall Chestnut Ridge Plaza Montvale, N.J. Old Postcards 391-0906
Wanted 11-5:30

Porcelain • Art Glass
Distinctive Wedgewood
Cups & Saucers
Victorian, Nouveau & Deco Jewelry
dorothy last
fine antiques
The Antique Mall 30 Chestnut Ridge Rd., Montvale
Thurs.-Mon. 11-5:30/573-0610

SAMP MILL FARM ANTIQUES
Featuring Country Furniture & Accessories
At Home in July
109 W. Saddle River Rd. Saddle River 327-6252
Wed.-Sat. 1-4:30 P.M. or by Appt.

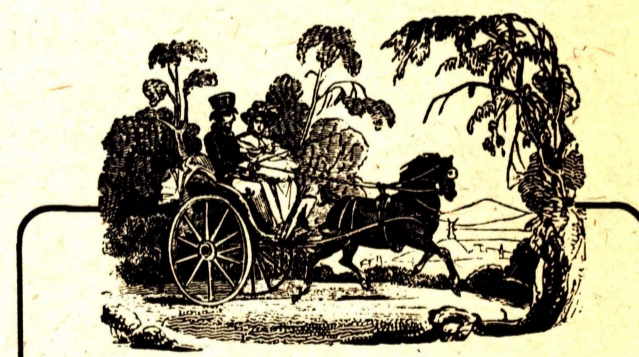
Past In Present
Primitives-Glass-China
Paintings-Furniture
Lighting-Clocks
Bought-Sold-Appraised
E. Allendale Avenue Barnstable Ct. Saddle River, N.J. 327-8229
Open 11-5 pm Closed Sun., Mon.

CHAIR CANING & RUSHING
Bamboo & Rattan
Gluing & Repairing • Cushions, Pillows
Seats Recovered • Antiques Restored
327-7222 NOON-6 P.M.

THE BOOK-NOOK & THE PLATE LADY
OLD & RARE PAPER PARAPHERNALIA
Everything That's Desirable
ANTIQUE & COLLECTIBLE CHINA
The Antique Mall
Chestnut Ridge Shopping Center
Montvale, N.J.
Thurs.-Mon. 11-5:30 573-1525

Independence Day Sale
Thurs. • Fri. • Sat.
5th 6th 7th
Selected items of Clothing, Jewelry,
Antiques and Collectibles
Closed for Vacation July 17-30
Reopening July 31.
No consignments accepted until Aug. 14.
Anything Goes
91 W. Allendale Ave. 825-8286 Tues.-Sat. 10-5

Bergen Caning & Supply
Chair Caning & Rushing
Antiques & Collectibles
445-6888
Closed Mon. 230 Godwin Ave., Midland Park



A Trip thru the Past is Minutes Away . . .
at
THE MONTVALE ANTIQUE MALL
Thirty Distinctive Shops
Featuring Quality Antiques & Collectibles
Fine Crafts & Miniatures
Downstairs at
Chestnut Ridge Shopping Center
Chestnut Ridge Rd., Montvale
Thurs.-Mon. 11-5:30 OPEN SUNDAYS 391-3940

An Armchair Guide to Local Historic Sites

"I'd love to go on vacation, but with the gas shortage . . ." "It sounds like a great idea, but with inflation the way it is . . ." "With gas and money as tight as they are, I really have to be careful . . ." Sound all too familiar? Well, now you can go on historical mini-vacations that are fun, educational, close to home and not expensive. This tour will take you to many old houses and to museums with historical exhibits. The list is by no means complete, yet it should provide enough points of interest to last the entire summer.

Lambert Castle

One of the area's best kept secrets is Lambert Castle (formerly Belle Vista Castle) on Valley Road in Paterson, just off Route 80. It is open Wednesday through Sunday, and there is a 50 cent charge for visitors 15 and over.

While the castle itself is noted for its architectural detail, it has two special exhibits; the 5,400 spoons in the Bertha Schaefer Koempel Collection; and the Corfur Clock, one of only two in the world. Built in 1867 for the Paris exposition, the clock gives perfect time, days, months, phases of the moon, temperature (in both F and C), barometric pressure and time around the world. The castle also houses an excellent display of Victorian furniture and a gift shop.

Dey Mansion Van Riper-Hopper House

It is well worth a drive to Wayne to visit two historic houses there: the Dey Mansion (pronounced "dye") and the Van Riper-Hopper House.

Located on Preakness Valley Road, the Dey Mansion is open on Tuesday, Wednesday and Friday from 1 to 4 p.m. and on Saturday and Sunday from 10 a.m. to 5 p.m. The fee is 50 cents for visitors 16 and over.

A costumed guide leads tours through this red brick and brownstone mansion in which General George Washington set up his headquarters for the month of July, 1780. The house was strategically situated for his military maneuvers. Either the original furniture or exact replicas of it in perfect condition fill the house. The kitchen is a newer addition and it is filled with a wide variety of old utensils. Beautiful and well-kept gardens surround the house and outlying buildings.

Closer by, on Berdan Avenue, is located the Van Riper-Hopper House. This is also known as the Wayne Museum. It is open on Monday, Tuesday, Friday, Saturday and Sunday from 1 to 5 p.m. and there is no fee. Costumed guides take you through the Dutch house with its 1860 furnishings. There are six fireplaces and the kitchen contains a superb collection of every kind of utensil imaginable. There is also an herb garden at the side of the house.

Old Stone House

Closer to home, is the Old Stone House Museum, 538 Island Road, Ramsey, open Sunday afternoons from May through Labor Day. There is no fee. This "museum" is actually two buildings, one a Dutch house and the other a museum housing old toys in which "touching" is allowed! The house has a good display of the

furnishings and utensils of the time, and there is also a small fan collection.

Fort Lee Park

Although an historical, not recreational, park, the Fort Lee Historical Park and Museum is both fun and interesting to visit. Located on Hudson Terrace, not far from the George Washington Bridge in Fort Lee, the museum is open Wednesday through Sunday, 9:30 a.m. to 5 p.m. There is a \$1.50 parking fee on Saturday, Sunday and holidays.

The museum has excellent military dioramas, audio/visual displays and a 12 minute movie about the history of Fort Lee shown every hour from noon until 4 p.m. on weekends and holidays. There is an excellent walk among the gun batteries, with informative signs at each rampart, look-out and bulwark.

In Wyckoff

Another house in which well-informed guides take visitors around is the Van Voorhees Quackenbush Zabriskie House, 421 Franklin Avenue, Wyckoff. The house is open on Wednesday and Friday from 9 a.m. to 3 p.m.; it is closed in August. The fee is one dollar for adults, 25 cents for students; preschoolers are free. Built in 1824, the plans for this house are carefully protected at the Library of Congress in Washington, D.C.

The furnishings in this Dutch house are from the Early and Federal Periods, mostly Chippendale and Hepplewhite; there are five fireplaces where open-hearth cooking is demonstrated during the school months. The country store, located in the basement, is

open then with handmade items on sale. There is a nice garden in back.

Paramus Museum

The Paramus Historical and Preservation Society Museum, also known as the Old Schoolhouse Museum, located at 650 E. Glen Ave., Ridgewood, is open on Wednesday from 2:30 to 4:30 p.m. and Sunday 3 to 5 p.m.; there is no fee. This museum's most valuable possession is a 1699 Bible. It also has exhibits of religious articles, farm implements and medical-surgical tools. Of the two "period" rooms, one is a small Dutch kitchen and the other is a little girl's bathroom.

Old Station

Four other museums offer visitors insights into the past, but on smaller, more specific scales. The Old Station Museum at 1871 Old Station Lane in Mahwah is open on Sundays from 3 to 5 p.m. and it is free. This building was the original wooden Mahwah train station, but was moved to its present site to make room for a larger stone station. Erie lackawanna memorabilia comprises most of the exhibits, and there is a caboose in back of the old station that is open for viewing.

In Park Ridge

The two museums in Park Ridge are situated very close to one another and one will soon house some of the exhibits currently on display in the other. The Wortendyke Dutch Barn, 13 Pascack Road, is open on Wednesday and Sunday, 1 to 5 p.m., from May through

October; there is no fee.

This barn, built in the late 1700s, is an excellent example of solid Dutch architecture. The main distinguishing feature is that the barn is wider than it is long. It has a very wide center door through which the farmer drove his wagons and the floor of the hay loft is made of saplings, supported by massive anchor beams, beneath which is the central aisle or threshing floor. The stalls for the livestock are along the side aisles; the animals faced inward.

The barn currently houses some farm implements, but many more will soon be moved over from the Pascack Historical Society Museum. There is also an herb garden.

The Pascack Historical Society Museum, 19 Ridge Road, is open on Sundays, 2 to 5 p.m., and is free. Besides the farm implements mentioned above and a small paperweight collection, the museum houses the world's only known wampum drilling machine in existence. Made by the Campbell Brothers of Park Ridge, it was used for over 100 years; it could drill six shell pipes (beads) at a time. Originally wampum was handmade by the Indians. It was a long, slender, usually white, bead made out of conch shells and worn for decoration. After the arrival of the white man, it was used as money for trading purposes, particularly by government men and fur traders, as far west as the Pacific Ocean.

Fall Visits

These three places of historical interest are

closed during the summer but will open after Labor Day.

The Garretson Forge and Farm Restoration, 4-02 River Road, Fair Lawn, is open on Sundays, 1 to 4 p.m. from September to November and February to May. There is no fee.

The Van Allen House, Franklin Avenue and Route 202, Oakland, is undergoing some renovation. Hopefully it will open by Oct. 7 and will then maintain its usual hours from 1 to 4 p.m. on the first and third Sundays of each month. No fee is charged.


There are some historic exhibits at the Bergen Community Museum of Arts and Sciences located at E. Ridgewood and Fairview avenues, Paramus. The museum is closed due to renovation, but reopening plans are scheduled for Sept. 5. From then on the hours will be from 10 a.m. to 5 p.m., Tuesday to Saturday, and 1 to 5 p.m., Sunday. The fees are 50 cents for adults and 25 cents for children.

by Susan Donaldson

Key to "A Conundrum Banquet"

Page 7

1. baked beans	15. crullers
2. bread & butter	16. coconut cake
3. sandwiches	17. chocolate cake
4. hash	18. molasses cake
5. corned beef	19. orange cake
6. tongue	20. tea
7. eggs	21. coffee
8. brown bread	22. sage tea
9. potato chips	23. milk
10. taffy (kisses)	24. water
11. cucumber pickles	25. apple sauce
12. potato salad	26. canned pears
13. chese	27. onions
14. catsup	28. toothpicks



TAMMY'S Dollhouse

Complete line of • Fine Toys and Books
• Dollhouse Accessories
• Wallpapers • Building Materials
• Electric Lighting • Furniture Kits

Mon-Sat 10-5 p.m. Effective July 1 Closed Thurs even

393 Franklin Ave., Wyckoff, N.J. 891-9536

When you travel to Arizona visit the Lovena Ohl Gallery, an extraordinary collection of primitive and contemporary American Indian Art.



Lovena Ohl Gallery

Come see a fine collection of Navajo rugs

7373 Scottsdale Mall
(across from Civic Center)
SCOTTSDALE, ARIZONA



plantasia

Flower and Plant Shop

OPEN 7 DAYS

Thurs.-Fri til 9 p.m.
Sunday til 2 p.m.

at the market-square

West Allendale Ave.
Allendale

825 1660

Knitting Yarns

Up to **50% off** on all knitting yarns

Petit Point Junction

Register now for needlepoint & counted thread classes

825-1790

73 east allendale ave
saddle river new jersey



From Boulder Colorado HANDWOVEN INDIAN RUGS & WALL HANGINGS 100% Wool

50% to 60% below retail

Unconditionally Guaranteed

5 ft. x 8 ft. \$89.00 (add \$2.50 mail & hndl.)
Order by Color: Blk & Wht
Design with Brown or Gray
Catalog \$1.00 (refundable)

ANTIQUITY IMPORTS
25 Candlestick Lane
U. Saddle River, N.J. 07458
327-4982 aft. 5

The Artist's Haven

"in the hollow"

201-825-8090

156 West Saddle River Rd. Saddle River, N.J. 07458

Custom Framing

In the Best of Taste

Discounted Art Supplies

- Oils
- Watercolors
- Silk Screening
- Brushes
- Batik Supplies
- Block Printing