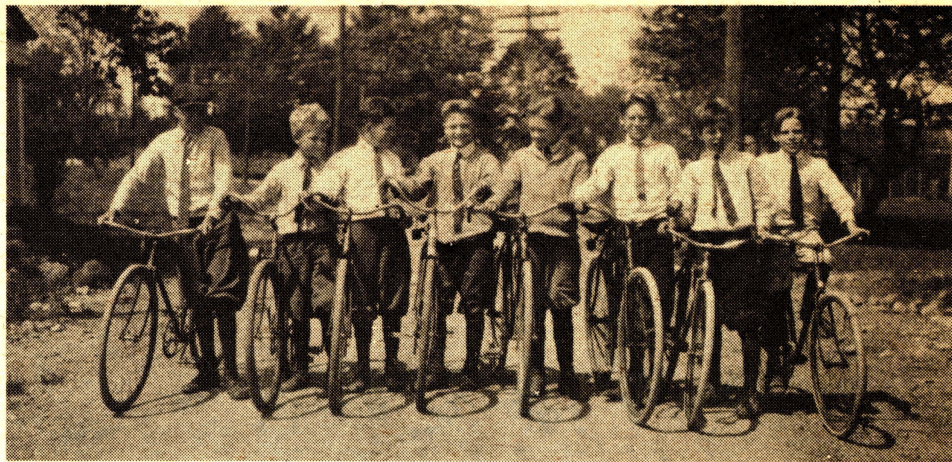


TOWNSHIP SPORTING EVENTS



Spectators move faster than the horse at a polo match at the Saddle River Polo Fields in the 1920s.



Knickers make perfect bike wear in the summer of 1917 in U.S.R. From left to right are Homer Kimmerer, Fred Bramhall, Norman Yeomans, Pete VanKampen, George Derbyshire, Ed Weiss, Alton Zabriskie and Herbie Weiss.



Whiling away a lazy summer afternoon at Packers dock behind the Storms home in Saddle River in the 1890s.



Early gymnasts show their stuff at Anona Park in the 1930s.



A serious Allendale baseball team poses for the sports photographer in 1905. Standing: Frank Nimmo, Mills Ackerson, George Nimmo, Mgr., Wesley McKeeby, Sam Pritchett and John Cook. Seated: Walter Steele, Eddie Hilbert, Arthur Appert and Harold Ackerson. Foreground: Walter Dewsnap, mascot.

SUMMER SALE
 Infants to 14

Seedling?

Tues.-Sat. 10-5
 327-4400
 7 Barnstable Court
 Saddle River
 N. J.

Summer Sale

MONOPOLY

825-8228
 3 Barnstable Court Saddle River • Tuxedo Park

EARLY DAYS of ALLENDALE

"The Newport of Bergen County" 1880-1894

Incorporated November 10, 1894 - 3-3/8 square miles

Scale: 1 inch = 1/4 mile

LEGEND

BASE MAP - ALLENDALE, MARCH 1971. HOUSES & NAMES FROM 1861 MAP & 1876 ATLAS. EXISTING HOUSES ARE SHOWN SOLID & PRE-CIVIL WAR HOUSES DEPICTED AS THEY PROBABLY LOOKED AT THAT TIME. NUMBERS IN BRACKETS INDICATE SOURCE DATES.

MAHWAH

WYCKOFF

RAMSEY

SCHOOL DISTRICT No. 55

WALDWICK

NEW SUCCESS (1811)

PETERSFIELD or FELTON

NEW PROSPECT (1811)

SADDLE RIVER

FIRST SETTLERS John Laubach & Bowles Van Houten
FIRST TELEGRAPH OFFICE 1833
FIRST TELEPHONE 1897
ROCKLAND ELECTRIC 1900
R.F.D. STARTED JULY 1903
POPULATION 1910-937 1970-6211

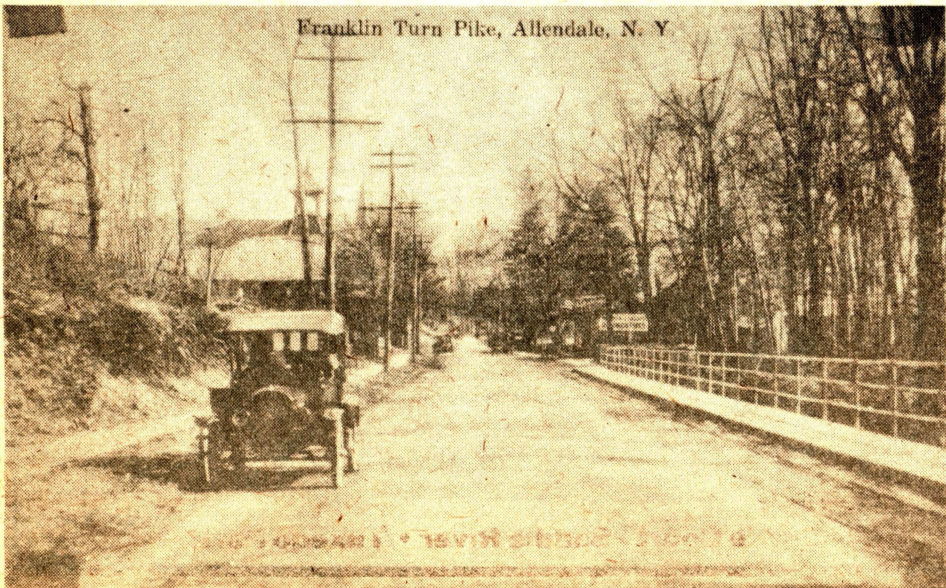
In the mid 1800s, the Allendale area was part of the Strawberry growing center of Bergen County which was the largest producer of berries in the country.

FRANKLIN TURNPIKE was chartered in 1806 & named for Gov. Franklin

- NEW BARBADOES 1693
- RAMAPO TRACT 1709
- FRANKLIN TOWNSHIP 1767
- HCHOKUS TOWNSHIP 1849
- ORVIL (named for ORVILLE J. VICTOR) 1885
- ALLENDALE (named for JOSEPH WARNER ALLEN) 1894



The Quackenbush-Alling house on Franklin Turnpike, c. 1860, above has seen many changes along the pike from horses and stagecoaches to the vintage cars, below, and today's speeding gas guzzlers. Chartered as a toll road in 1806, the little toll house stood at what is now the Turnpike and Crescent Avenue. The town was, in fact, generally known as "The Turnpike" until the coming of the railroad in 1848, when it was named for the Erie Railroad surveying engineer, James Warner Allen.



Celery Farm Rich in History

According to the Allendale Historical Society, that delightful area known today as the Celery Farm was designated as "Wolf Swamp" in maps dating from Revolutionary times. Prior to that, it was in all probability inhabited by Indians. Numerous artifacts have been found on the site over the years.

The first commercial use of the property came in 1866 when John J. Zabriskie of Ho-Ho-Kus purchased the land in the hopes of developing it into a profitable peat farm. Although mush work was done to drain the bog and bring in the necessary equipment and buildings, it was apparently less than successful. A quote from a Paterson newspaper in 1884 referred to an old building on the property as a "relic" of the peat venture.

The land was first utilized for farming when it was purchased in 1888 by Henry J. Appert, who had come to America from Switzerland. By this time, according to Mr. Appert's daughter, Ella, it had become overgrown with thick brush and trees. It took a couple of years, she says, to clear the land and prepare it for farming. Onions were the first crop, but the farm later changed to celery and lettuce. Called the Allendale Produce Garden, it started to thrive and delivered its produce daily to the wholesale markets in Paterson and New York.

When Henry Appert retired in 1915, his son Arthur took over the property and the business, making further improvements and adding additional land from nearby acreages. The farm during this period was noted for its meticulously kept plots of black soil with rows of developing green crops, each plot set off by a surrounding border of green grass. Produce was sent to wholesalers in New York, Philadelphia, Boston and Paterson as well as the Campbell Soup fac-

tory. The celery was known by the two brand names "Triple A" and "King Arthur."

Arthur Appert retired from his farm in 1943, selling the property and business to McBride, Inc. of Paterson. But the farm did not long continue, and the property today has returned to the wild where it provides a home for many animals and hundreds of birds.

Progress is now being made on the Borough's effort to acquire the land for a nature preserve.

by Phyllis Duffus



Eric's Corner

Everything to do with jewelry . . .

at the marketsquare Allendale, N.J.

Tue.-Fri. 10-6 327-7552 Sat. 10-4



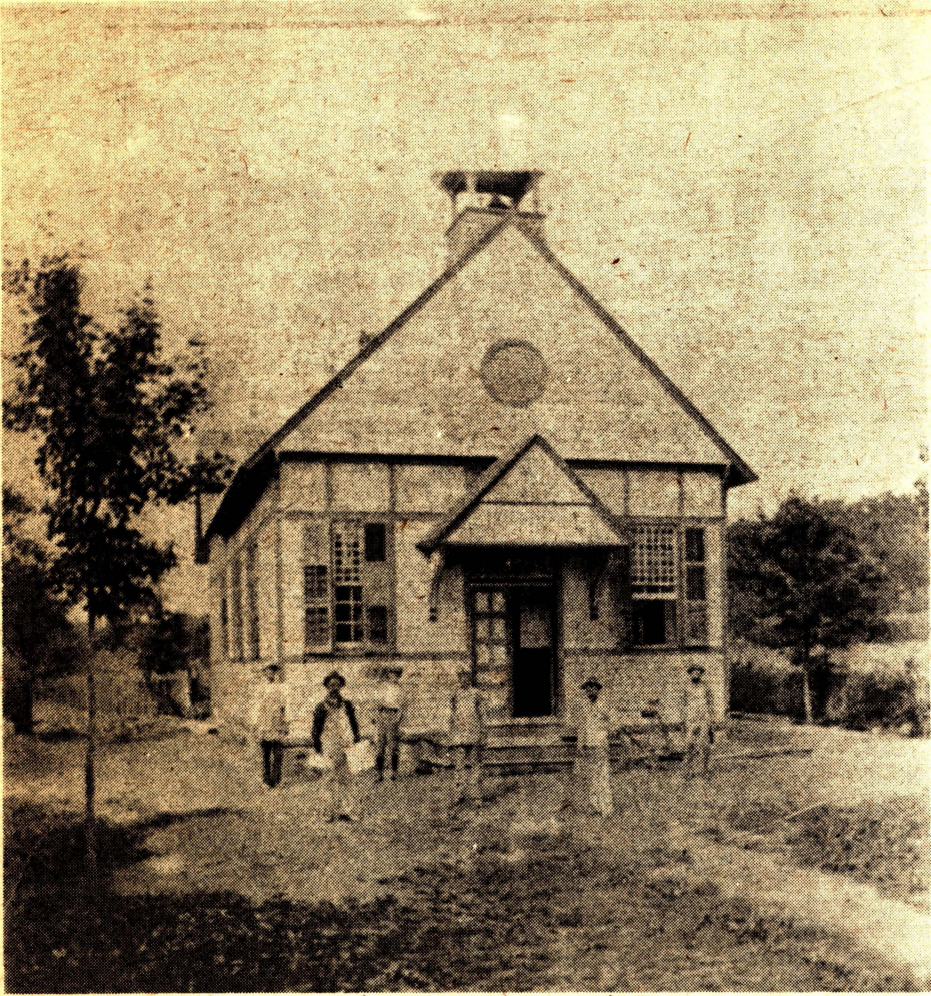
FREDDIE'S GIRLS

Coiffures & Beautiful Coloring

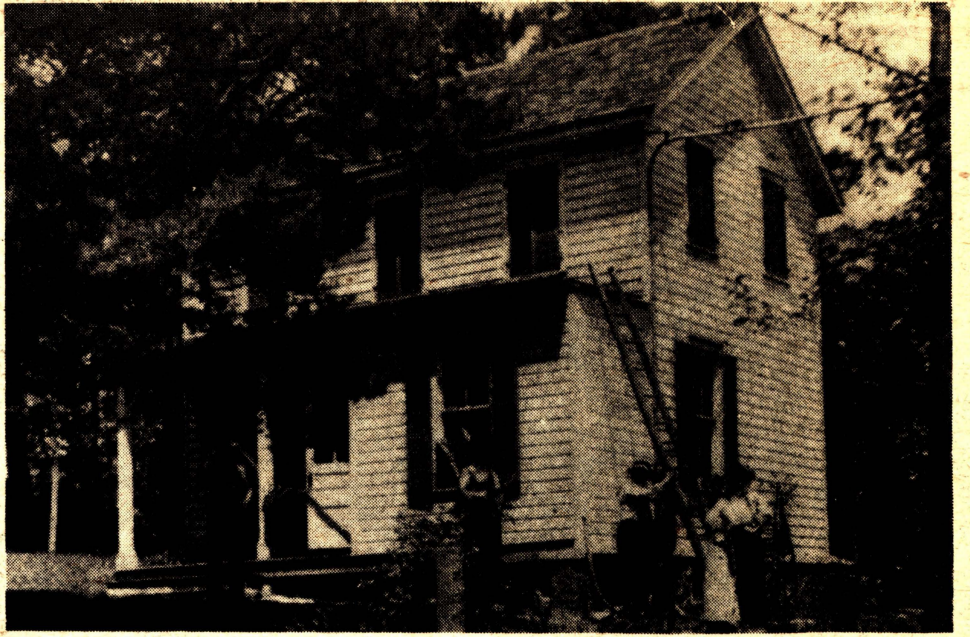
140 Allendale Ave., Allendale, N.J.

327-7122

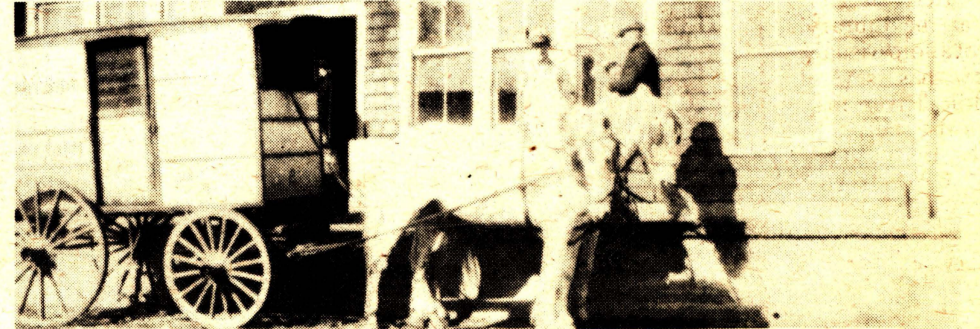
Across from Allendale R.R. Station



The Storms Company building crew stands in front of the newly finished school in Saddle River. (It is now part of Wandell School.)



The first telephone exchange in the area was in the home of the Misses Straut in Saddle River on East Allendale Road. They began their service in 1913 and were on call 24 hours a day. It is said that their service was so good that a complaint was never lodged against them.



George Eckert owned the Sunnyside Dairy Farm in Saddle River which had a large route in Ridgewood. "Unc" Schuler drove delivery truck in this 1922 photo.

Some Appreciation

Records show that when Saddle River filed for incorporation as a Borough on October 16, 1894, the total assessed valuation of the entire Borough was calculated at \$179,700.

Most recent figure for today's net taxable valuation is \$149,500,000. Some appreciation!

If you are troubled to get soft water for washing, fill a tub or barrel half full of ashes, and fill it up with water, so that you may have lye whenever you want it. A gallon of strong lye put into a great kettle of hard water will make it as soft as rain water.

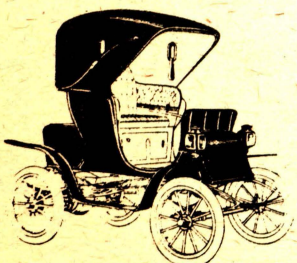
A stocking bound on warm from the foot, at night, is good for the sore throat.

A few potatoes sliced, and boiling water poured over them, makes an excellent preparation for cleansing and stiffening old rusty black silk.

Patience! why, 'tis the soul of peace; Of all the virtues, 'tis the nearest kin to heaven:

It makes men look like gods. The best of men that e'er wore earth about him, was a sufferer, a soft, meek, patient, humble, tranquil spirit.

Dekker.



EARLY DAYS of SADDLE RIVER

