

# Marshal Pay: \$25 Yearly

ALLENDALE — In January of 1895, the borough council appointed a town Marshal at the salary of \$25 yearly.

In 1938 the town was given a police department with William Reimer as chief and five men. However, the department was later abolished for economic reasons.

In the mid forties it was determined that the town needed protection and the marshal system

now serves as lieutenant of the department with Sgt. Verwer and Sgt. Robert Congleton heading the 11 man force.

Perhaps the biggest crime in town was the still unsolved robbery at the Allendale Bank in 1938. Men with machine guns entered the bank and made everyone get down on the floor. Then they made off with a substantial amount of money.

## Volunteers Rolled In \$1 Ambulance

ALLENDALE — A 1928 Reo purchased from the Hackensack Hospital for \$1 was the first ambulance the borough ever had, and indeed provided part of the impetus for establishment of the Volunteer Ambulance Corps, the first in Northwest Bergen County, in the mid 1930's.

Mrs. Mary Stone Conklin of Hackensack Hospital had asked Dr. Fred Kanning if the town could use the ambulance, since the hospital was getting new ones. At that time most municipalities had no ambulances. Dr. Kanning put the matter before Police Chief William Reimer.

"You get it and we'll drive it," said Chief Reimer. So Dr. Kanning made the arrangements and the town had an ambulance.

## 1919 Allendale: A Good Place For The Healthy

ALLENDALE (1919) — Drug-store-less, doctor-less, cemetery-less — Allendale is a good place to live in — if you like to live under those conditions. The situation will soon be changed. There is a rumor that a doctor is coming, an undertaking establishment will soon make its advent, besides a burial ground having already been selected — all of which sounds like collusion.

## Bingo A Mystery Game

ALLENDALE (1925)—It may not seem possible, but area residents in 1925 didn't know what Bingo was. The exact definition of the word may still be unknown but there are few who do not know how to play it. However, at that time, it was held up to the public as a great mystery game and they were urged to come and see what it was all about.

## Allendale Protects Calm

ALLENDALE — The serenity of life in early Allendale was protected by one of the first ordinances passed in the Borough Council. I made it unlawful for any person to ride a bicycle on any sidewalk within the borough.

## ANNIVERSARY FEATURE

was again established. Robert Wilson was chief marshal and Frank Parenti, now the borough's police chief, was made a full time marshal.

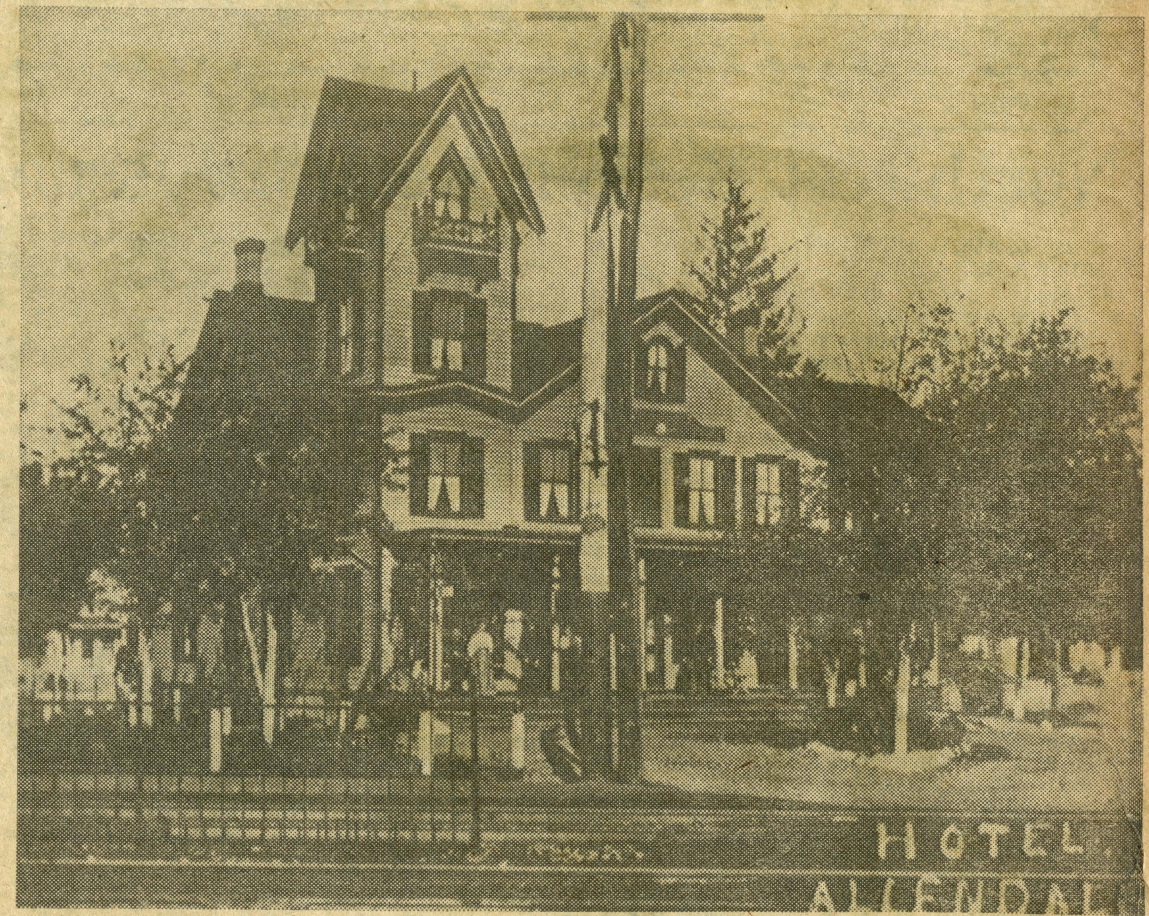
In 1959 the police department was re-activated with Robert Wilson appointed Chief, Frank Parenti appointed lieutenant and James Tallia and Andrew Baum and later Raymond Verwer all in the force by the end of 1963. Baum was promoted to sergeant and later, in 1968, to lieutenant. He died in June of last year shortly after taking his new post. Tallia

## Firehouse Movies A Family Ritual

ALLENDALE—A romance of the old west lives again, says the Argus of July, 1925, in Zane Gray's "The Border Legion", a Paramount picture with a featured cast headed by Antonio Moreno and Helene Chadwick which was shown at the Allendale firehouse as their weekly presentation.

For several years the firemen sponsored moving-pictures for the public to attend in the firehouse and a family ritual every Tuesday night was to don best bibs and tuckers and trek across the tracks to see the thrillers offered by the department.

Clippings from Ridgewood Sunday News, July 20, 1969.



The Allendale Hotel, pictured at the turn of the century, was an oasis for strawberry commission agents, salesmen and pickers seeking refreshment.