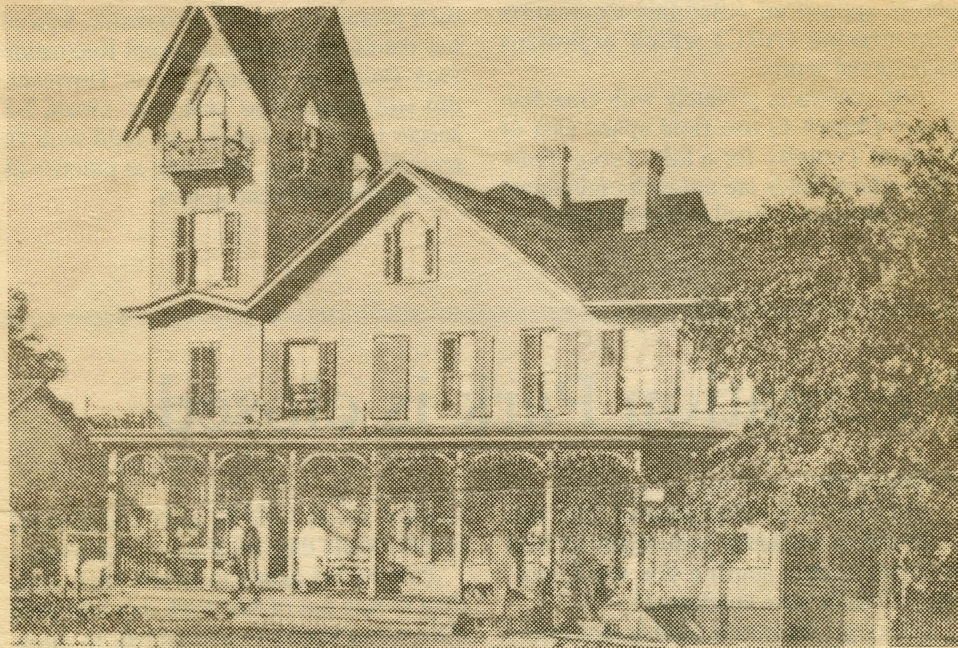


# Centennial Countdown



## Allendale gathering place

The Allendale Hotel, built in the early 1900's was built on the site of Sherwood and Tallman's Hotel. Sherwood and Tallman's was a gathering place in the late 1800's when the strawberry farmers shipped their fruit to New York. After the Erie cars, nine for berries and two for the berry-growers, had left the Allendale station for Jersey City, the sellers, pickers and commission agents retired to the hotel for a night of revelry. The photograph above shows the hotel as it looked in 1907.

*photo courtesy of A History of Allendale 1894-1964*